



February in Tampa

A Monthly Publication of the Tampa PC Users Group, Inc.

Vol. 17 No. 2 February 2004

## Meeting

### Software for Consideration

Wednesday, February 11, 2004  
6:30 PM

Art Pepin Hospitality Room  
Pepin Distributing Co.  
6401 N 54th St  
Tampa, Florida

**Meeting Preview:** Dave Whittle will present the software of several companies he represents. We will also have the usual half-hour Windows SIG.



### Editor's Comments

By William LaMartin, Editor, Tampa PC Users Group  
[lamartin@tampabay.rr.com](mailto:lamartin@tampabay.rr.com)

This is a full newsletter this month, so there's no room for more than a very short note from your editor. That is the way it should be most of the time.

Dave Whittle will be demonstrating new versions, I presume, of some of the software he showed us on his visit last year for panoramas, 3D slide shows and databases. I actually used two of the titles I bought from him at that presentation, and you can see the results at <http://www.lamartin.com/virtual.htm>. There are three virtual tours and two 3D displays.

My HP ScanJet 5370 Cse scanner died last month and was replaced by an Epson Perfection 3200 Photo Scanner. So you'll probably be seeing a review of that next month. ♦

INSIDE THIS ISSUE	
<a href="#">Meeting Preview</a>	1
<a href="#">Editor's Comments</a>	1
<a href="#">Minutes</a>	2
<a href="#">A Novice's Struggle</a>	3
<a href="#">Tiny Cars 2</a>	4
<a href="#">Links</a>	5
<a href="#">StrokeIt</a>	6
<a href="#">Looking Back to 1994</a>	8
<a href="#">SIG Report</a>	10
<a href="#">Members' Help Line</a>	11
<a href="#">Map</a>	12

**March Meeting Topic:** PowerQuest – Approaches to Backing Up your Hard Drive

## \*\* OFFICERS \*\*

<b>President:</b> Kevan Sheridan (president@tpcug.org)	988-6480
<b>Vice President :</b> John Witmer (JWITMER@Pepindist.com)	963-3760
<b>Treasurer:</b> Mike Hodges (mphs@aol.com)	962-2114
<b>Secretary:</b> Peggy Pulliam (pegrance@yahoo.com)	253-0438
<b>Member at Large:</b> Mary Sheridan (mcpease@mindspring.com)	988-6480

## APPOINTED ( Volunteers)

<b>Editor:</b> William LaMartin (lamartin@tampabay.rr.com)	251-3817
<b>Librarian:</b> Larry Anders (Larry@AndersNet.com)	989-9119
<b>Programs:</b> Mary Sheridan (mcpease@mindspring.com)	988-6480
<b>Membership:</b> Mike Hodges (mphs@aol.com)	962-2114

**Home Page** <http://www.tpcug.org>

Bits of Blue is published by the Tampa PC Users Group, Inc., a State of Florida registered non-profit corporation, to provide educational information about personal computer systems to its members. Our mailing address is P. O. Box 3492, Tampa, FL 33601-3492.

However, for business concerning this newsletter, Bits of Blue, please contact the Editor, William LaMartin, at 821 S. Boulevard, Tampa, FL 33606-2904; 813-251-3817; lamartin@tampabay.rr.com.

Technical information found in this publication is not necessarily compatible with your hardware and software; plus other errors or misprints could occur from time to time. Therefore, the use of programs, commands, functions or anything of a technical nature appearing in this publication will be at your own risk.

Contributors are asked to submit articles as an ASCII, Microsoft Write, Microsoft Word, or Word Perfect file to the editor at 821 South Blvd., Tampa, Florida 33606-2904 or to lamartin@tampabay.rr.com.

Permission to reproduce portions which are not specifically copyrighted is given to other computer users groups for nonprofit use. Reprints must be unaltered; proper credit given to the author and publication; and a copy of the publication must be sent to the attention of the Bits of Blue Editor at the club address. All other reproduction is prohibited without the specific written permission of the original author.

The use of trademarked and copyrighted names herein is not intended to infringe upon the owner's rights but rather to identify the products for the enlightenment of our users.

Commercial advertisements will be accepted. For rate information please contact the Editor by one of the above listed methods.

All advertisements must be prepaid by check payable to TPCUG, be in camera ready format (actual size, black ink on white paper), and be submitted on or before the 20th of the month preceding the month of publication. Commercial advertising is usually limited to 25% of the total space of an issue. The Editor reserves the right to hold ads if the total space for ads exceeds this limit or if they are not received on time.

Members may insert non-commercial ads at no charge with the following limitations: no more than 4 ads per member per year; no more than 40 words (240 bytes including spaces); must be camera ready copy or an ASCII file on diskette or as an attachment to an email message to the Editor. Those wishing to place ads are to contact the Editor, William LaMartin, at (813) 251-3817 for space availability and for further information.



Member of  
The Association of  
Personal Computer User Groups

## Minutes of the January Meeting

By Mike Hodges, Treasurer,  
Tampa PC Users Group  
[mphs@aol.com](mailto:mphs@aol.com)

Our Member at Large, Mary Sheridan, opened the meeting in her inimitable way and provided us an invaluable update on the current PC viruses and remedies and the after-effects of certain spy-ware programs and other counter-measures that one can take to best protect one's PC activities. Mary also extended an invitation to all to attend the Florida annual users group weekend conference to be held in Kissimmee starting at 6 pm on Friday, March 5. Mary then announced and introduced the elected officers for 2004, who remained unchanged from 2003. Mike Hodges, the incoming and outgoing treasurer, announced that the goal was to achieve 50 paid-up members for 2004 and already seven members had signed up in January. Mike then requested that members volunteer to support the Board as program chair or in any other capacity.

Our presenter, Dave Dabney from LC Technology International of Clearwater, then provided us a very informative live demonstration of his company's data recovery/restoration software products. First, however, Dave afforded us some good tips that would help us not require the use of his products as in "prevention is better than cure."

- Partition your hard drive and separate your data from your system drive.
- Take your memory card out of your camera before air travel to avoid x-ray memory dumps.
- Beware of the low battery warning and remove memory card before completely draining your battery.
- Do not edit pictures on your camera card in camera. First download to PC.
- Use multiple spare cards instead of deleting a few unwanted ones so as to make room for a few more pictures.
- Ensure flash cards and memory cards are prop-

(Minutes.....Continued on page 7)

## A Novice's Struggle with CD-RW Drives

By Merrill Friend, Tampa PC Users Group  
[mfriendtampa@worldnet.att.net](mailto:mfriendtampa@worldnet.att.net)

Some time ago I purchased a Buslink Ultra-high speed CD-RW external drive for a laptop which had only a CD Rom drive. The Ultra High Speed unit has a maximum write speed of 52X, which is plenty fast. Then I got some Ultra high speed CD-RW Memorex discs and I was in business. After installing the drive, which connected using a 2.0 USB port, all worked fine. I could easily record, erase and re-record again on those fabulous Memorex discs. I could select various record speeds, and all I tried seemed to work effortlessly. I also got some Sony high speed CD-R 700MB discs, which also worked fine and were considerably cheaper. This external drive was supported by Nero software. I was happy.

Later I purchased a new Gateway laptop computer with a built in CD-RW drive with Roxio software installed. Since everything had worked so well with the Buslink external drive I expected that I would have the same wonderful and smooth experiences with the Gateway drive. I should never have been so naïve.

I tried my Memorex ultra high speed CD-RW discs in the Gateway computer and got a message from Roxio that I had not installed proper media in the drive and should immediately place a blank CD-RW disc in the drive. I tried one Memorex after the other in the drive and got the same message on all of them. I then tried the Sony CD-R discs which the drive did recognize and I was allowed to burn a CD-R disc.

Next, I went to Roxio's home page at [Roxio.com](http://Roxio.com). The first thing I needed there was the identification of the specific version of Roxio Software I was using and the serial number of the product. I was told that I could get that information by opening the Roxio program and then clicking on "HELP" where I could see the software version as well as the serial number. Well, I got the software version but no serial number. I was to learn later that this was because the Roxio software came installed on my com-

puter, and I didn't have a separate Roxio disc with a serial number. Without a serial number I couldn't get technical support from Roxio. I had learned the software version was 5.3.5.10. I then called Gateway and they said it was Roxio's problem. Now why wasn't I surprised to hear that?

I ended up joining the Roxio online discussion group where a serial number is not needed. I soon learned I did need one more bit of information. I needed specific details on the type of CD-RW drive that was installed in my machine. I went to "My Computer", clicked on the CD-RW drive and selected properties and learned that I had a QSI CDRW/DVD 242U drive. Armed with all this data I was able to fully delineate my problem to the discussion group. Within a few hours I had one very good and helpful response.

The respondent indicated that he had researched my drive somewhere and learned that the RW rating for that drive is 10X Maximum. Thus it would be unable to read my Ultra High Speed Memorex discs. He then advised me that there are three speed groups for RW drives. Per this person, the speed categories are as follows:

Low Speed, which is from 1x to 4x  
High Speed, which is from 4x to 12x  
Ultra High Speed, which is from 12x to 24x

He also added that Memorex discs are the most problematical for use with various machines and software, although they had worked perfectly with the external Buslink Ultra High Speed drive previously. I was advised by the writer that he had also had difficulties with Memorex discs of the correct speed range and had changed to Verbatim discs of 650MB size suggesting that the 700MB size of the Memorex may have also been a factor. He stated that the Verbatim drives worked fine.

I began shopping around for different brands of CD-RW discs. I didn't find any Verbatim discs, but I did locate some "High Speed" Maxell discs at Office Depot so I bought a small package of them. These discs were recognized by my laptop, but my machine

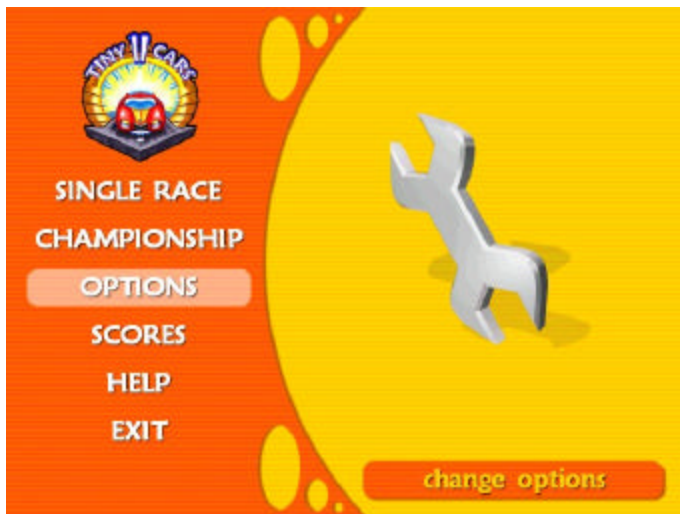
(Novice..... Continued on page 5)

## Tiny Cars 2

By Bob LaFave, Tampa PC Users Group  
[boblala@ij.net](mailto:boblala@ij.net)

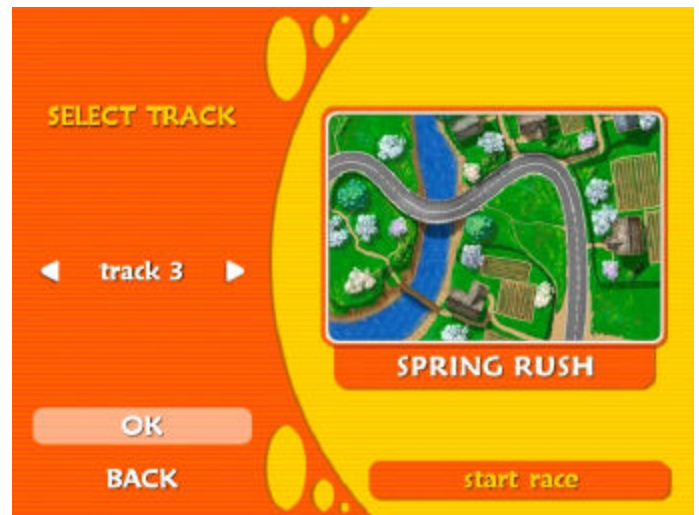
*Tiny Cars 2* was offered by Natalia Matveeva from **REALORE Studios** for review to the TPCUG, and I quickly answered that I would be a willing test subject. I mean, who can refuse playing a game and providing William with food for his “*Newsletter Monster!*” You can download the game at <http://tinycar2.realore.com> for trial and purchase the full version for \$19.95. No CD is available and the file is 9.7 MB in size with the current version being 1.10.

*Tiny Cars 2* is a throw back to the first games that were produced for computers years ago, simple arcade type games that we all can play and enjoy. The game is easy to start, either as full screen or windowed, and has a simple option menu to set up.



The options provide for controlling the sound of the game, controlling either the four keyboard arrows or joystick, and a “Check for Updates” feature to keep the game updated with the latest version. The update feature starts your web browser and goes to the REALORE site and gives you a message of your version and the current version. You then have a link to the download of the newest version. You can set the type of race as either Single or Championship and review the top times by racetrack by going to

the Scores screen. The Help options are three simple pages with game instructions and purpose. Once the type of race is selected you can then choose Profile that sets how hard the racecourse is and the player’s name. You then get to Select Car to choose the car that you are going to use. Next is the Select Track for the track that you are going to race, and finally the race will start.



This setup can be done quickly and is easily understood, no remembering a bunch of control codes. Yes, that is the best part of this game. I can play it and enjoy it at my age. That is not to say that I dislike complicated games *but*: I will say that I do not have the time, concentration, or memory available to play some games today. I have tried with my sons *Playstation* and *Xbox*, and I cannot get comfortable using all the buttons that you have to push, some multiple times, for playing the games. I can control four arrows using both my hands and easily go forward, backwards, left or right to navigate the course. It’s even easier with my joystick in that all I have to do is point in the direction that I want to navigate. As for getting around the course in the least amount of time and avoiding the other cars and picking up the four *Bonuses* that are available (look at the Help Screen page 1) by driving under them, I can easily handle the game and have enjoyment instead of stress.

The game is definitely PG rated and is safe for children to play. Yes, you can crash into another car but

(*Tiny Cars.....Continued on page 10*)

*(Novice.....Continued from page 3)*

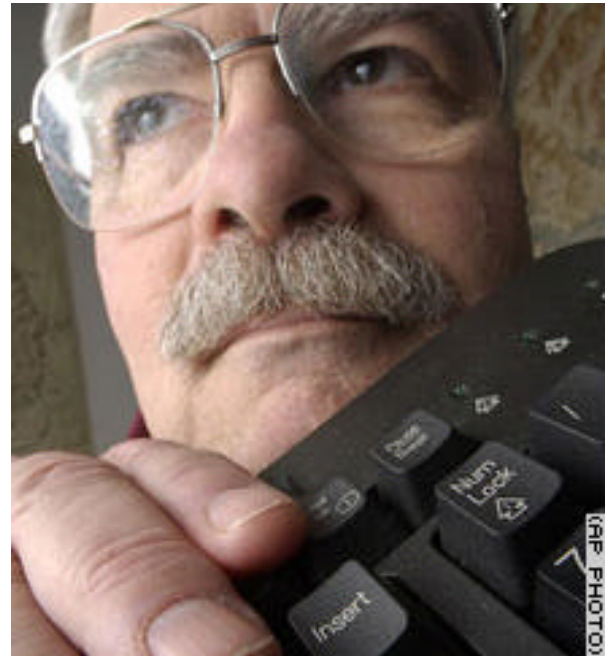
indicated it would only read and write to this disc at a 4x speed. No other speeds were available on my machine. I tried writing to them and they worked satisfactorily although slower than I had anticipated. I was also able to erase material satisfactorily. So now I at least had a working CD-RW drive, albeit a slow one.

After all this difficulty, I began to wonder just why CD-RW drives are needed? Why not just a CD-R? Wouldn't that do just as well? All the new machines seem to be coming out with CD-RW drives, so naturally I wanted to have the latest most modern drive but what exactly can I do with it? I looked through the stock of CompUSA and had difficulty locating any CD-RW discs except for those Memorex discs mentioned earlier. Yet there were literally tons of CD-R discs of various manufacturers. That should have told me something. The CD-R's were also much less expensive and available in large packages at a discount.

For my purposes I felt the CD-RW would be helpful in making up discs to save and organize material which I might reorganize or make minor changes to from time to time until the project was finalized. Then when I had the material in its final state, I could put it all on one CD-R disc as a per-

*(Novice.....Continued on page 7)*

## Internet Picture of the Month



### Inventor of Ctrl-Alt-Del To Retire

From CNN at <http://www.cnn.com/2004/TECH/ptech/01/29/ctrlaltdel.man.ap>, we have the story of the man, David Bradley, who wrote the code for the IBM PC to reboot when that famous key combination, Ctrl-Alt-Del is pressed.

---



---

## February's Interesting World Wide Web Locations

Tampa PC Users Group (That's us)

Uncle Sharky's US Pres

photo-i index (digital photography)

Google Guide - Interactive Tutorial

TV guide

Search System (search government records)

Hotel Discount!Com

<http://www.tpcug.org/>

<http://news.unclesharky.com/>

<http://www.photo-i.co.uk/Welcome.htm>

<http://www.googleguide.com/>

<http://www.tvguide.com/>

<http://www.searchsystems.net/>

<http://www.hoteldiscounts.com/>



Some of these links will join the many already on the Links page at our web site, where you need only click on the name.

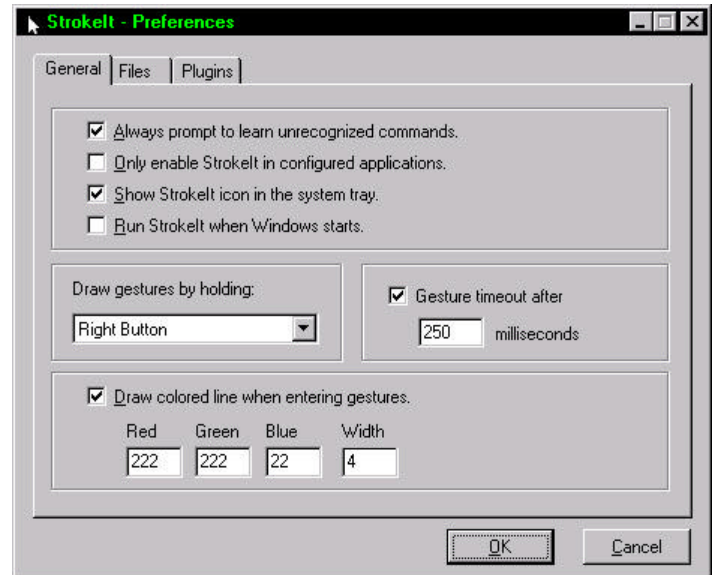
## StrokeIt Command Editor

By Larry Anders, Librarian,  
Tampa PC Users Group  
[Larry@AndersNet.com](mailto:Larry@AndersNet.com)

Recently I upgraded my computer system to a new Windows XP Pro Media Center Edition machine that is built around a TV card and a dynamite 5.1 surround sound system. Along with the computer, I also purchased a new 20" flat panel monitor. At the same time my wife bought me all new furniture for my computer room. [If you don't know, a computer room is what you call one of the bedrooms your kids used before they moved out on their own.] Part of my new computer furniture is a desk unit that has a center drawer which has a front that folds down to reveal the keyboard and mouse. The drawer is long and wide and slides out rather far. In fact, it pulls out far enough to allow me to almost lie down in my chair while working [or playing] on my computer. But alas, I was having a problem enjoying this relaxing form of computing. Occasionally I have to sit up and type commands into my computer. Well, not anymore. At least I don't have to sit up as much as I did before.

The other evening I was watching one of the lovely ladies, Sarah Lane, on TechTV's The Screen Savers program and voilà, there was my answer. Now don't get me wrong! I spend a lot of time on a computer every day and have for years; so much time that I have already had carpal tunnel surgery on both hands. I figure the best way to prevent this sort of repetitive stress syndrome in the future is to keep my arm as straight as possible while operating the mouse. And when you're practically lying down your arm is almost straight so there shouldn't be any stress on your hand... right?! [It's possible I could be a little lazy, too.] Well anyway... back to my voilà.

Sarah was showing a **FREE** program that she had discovered called **StrokeIt**. [Clean up that dirty mind!] **StrokeIt** is an advanced mouse gesture recognition engine and command processor. Simply put, mouse gestures are simple symbols that you "draw"



on your screen using your mouse. But with **StrokeIt** installed, these doodles can now tell your computer what to do by recognizing the mouse stroke and performing an action associated with a particular mouse gesture. If you're a Palm or PocketPC user, you're already used to drawing similar gestures with your stylus.

I am using the standard defaults that installed with **StrokeIt**, which allow me to draw gestures by pressing down my right mouse button and drawing. But if you would be more comfortable using the left or middle buttons it's your choice. For example, right now if I were to press my right mouse button and drag a diagonal line from right to left, the current window I am working in will minimize. There are default configured gestures for programs such *Chat Programs, Explorer, FlashFXP, Internet Explorer, K-Meleon, Kazaa, LeapFTP, Media Player, mIRC, Mozilla, Nero Burning Rom, Netcaptor, Netscape 4.x, Outlook Express, Pegasus, Photoshop, Serv-U, The Bat!, Visual Studio, Winamp 2.x, Windows Desktop, WinRAR, and Winzip.*

**StrokeIt** also comes with 24 default gestures that work in most any program. For example:

- If you draw a "C" the current window or program you are in will close
- A stroke from down to up will perform the

(StrokeIt..... Continued on page 7)

(*StrokeIt*.....Continued from page 6)

“copy” command

- A stroke from up to down will “paste”
- A right angle from right to left then down will pop up the search window

I think you get the picture [or gesture]. Although these are built in you have the option to change the program in many ways. If you feel that you would rather have a different command associated with a predefined gesture, you can change that, or vice versa, you can change the gesture associated with a particular command, or you can just create and add a gesture created by you with a command that applies to a particular application that is not included with *StrokeIt*. *StrokeIt* defines an application as a program or a group of related programs, that are configured for special use by *StrokeIt*. The actions defined for each application will run when a configured gesture is performed in any window owned by that application. If for some reason you don't want gestures to be active in a particular application, then you can disable gestures in a particular application altogether.

There is a learning mode to teach *StrokeIt* to recognize new gestures, or better recognize existing gestures. Simply draw the gesture and *StrokeIt* will show you which gesture, if any, that motion is associated with. There are several websites devoted to *StrokeIt* with good instructions available for all of this so you don't have to be a programmer to know how to make changes.

This program could literally become your right hand [or left as the case may be]. Best of all **it is absolutely free!** Just cruise on over to <http://www.tcbmi.com/strokeit/>, read about it and then download it, **FREE**. The download will only take you a few seconds, even on a dial-up connection, because the file size is only 121 KB. This deal is really hard to beat. So the next time you're practically reclined in your computer chair and don't feel like sitting up in that correct posture just *StrokeIt!* ♦

(*Novice*.....Continued from page 5)

manent record. Now I am beginning to feel that the cost of the CD-RW discs plus these slower speeds may not be worth the effort. Also, I may end up owning five different brands of CD-RW discs in order to find one or two that will work well with my equipment.

Perhaps I might just as well make a CD-R disc and redo it as needed in its entirety and throw the previous ones in the trash as the new ones are made. Perhaps that will work just as well.

I may have one other option. That would be to install the Buslink external CD-RW Ultra High Speed drive to this laptop and use it for all my serious CD-RW work. The question I am struggling with is will this cause a conflict with my Roxio software for the factory installed CD-RW drive.

I suspect it should not since the Nero software for the Buslink external drive is designed to work only with that external drive (per instructions on the box). The Roxio software would continue to be used for the originally installed drive. If anyone has any other thoughts on that please let me hear from you. ♦

(*Minutes*.....Continued from page 2)

erly formatted.

- Protect your memory cards by placing in wrappers and not baring contacts.
- Take similar precautions for your PDA memory.
- Copy files by command as opposed to drag and drop copying.
- Back-up your data frequently on to external devices.
- Employ a UPS
- Back-up your important files not once but twice
- Beware of those large media files that write

(*Minutes*.....Continued on page 10)

## Looking Back to 1994

From the February 1994 Bits of Blue

### Secretary's Report

#### MINUTES OF 1/12/94 MEETING and PERSONAL COMMENTS

By: Jim Clark

The meeting, our last general meeting in the IBM Lake Pointe facilities, began on time at 6 PM, with our President, Harvey Bruneau, presiding. There were fewer members present than normal, probably because most had not yet received the newsletter which serves as a reminder, and perhaps because this was the last meeting at the lovely Lake Pointe building. A simultaneous meeting of the OS/2 Users group undoubtedly also drew some of our members. Unfortunate for them because they missed some very good info and an excellent presentation.

#### USER GROUP NEWS

**New Meeting Location In February:** Harvey reminded all that this was the last meeting in the Lake Pointe building and that the February meeting would be held at the regular time at the Ybor City campus of Hillsborough Community College. A map is included on the back page of the current newsletter and will be in the next newsletter as well. Harvey also reported that while he does not yet have a computer for the group in his possession, he does have a promise of a donor computer. Arrangements have also been made to borrow from his employer Dun & Bradstreet a projector on a very temporary basis; that is, we cannot make such an imposition for very long and we must obtain our own projector in the not very distant future.

**NonProf Status:** Harvey reported that the Post Office has approved our application for nonprofit status. That means our newsletter mailing cost will drop again by about 30-40%. (There is no connection between this and our application to the IRS for nonprofit status which is still pending.)

**Student Memberships:** Harvey informed the membership of a BOD decision to create a new membership category Students & Staff (of the HCC only). Annual membership fee is \$15. The good rapport established already in our relationship with the HCC has led to them making available space for use by our SIGs.

**Meet Your BBS:** All were advised that Kevan, our SYSOP, was holding another Meet Your BBS Nite on the third Wednesday of this month. If good participation continues at this excellent learning opportunity, it may well become a regularly scheduled event.

**Word Perfect Presentation Rescheduled:** Word Perfect has rescheduled their planned presentation at our February meeting to the April meeting. Harvey is working with Microsoft to come in for a presentation at the February meeting. CorelDraw is still scheduled for the March meeting.

#### INDUSTRY NEWS

**100 MHz 486:** Word in the industry is that these machines will be available this year. They will be only slightly slower than present Pentiums and will cost considerably less, like in the \$2500 range.

**MS Excel:** For those looking for the 5.0 version of Excel, Microsoft has announced that it will ship next month.

**Windows For Work Groups:** Version 3.11 of this program will be widely available soon. Be aware that while OS/2 is compatible with Windows for Work Groups 3.1, it is not compatible with Windows For Work Groups 3.11.

#### PRESENTATION

**CA Simply Money & Simply Tax** Computer Associates (CA) graciously made available for our benefit one of their Product Consultants, Marty Steiner, to give us a run-down on two of their products, Simply Money and Simply Tax. Since very few of those present knew much about CA, Marty gave us a little info about the company. It was surprising for most of us to learn that CA is the second largest software company in the business and has been around from the start. In fact, many years ago they produced the second spreadsheet program to be marketed, Super Calc. They have been big in the mainframe area all this time and are now working to improve their recognition in the PC world; hence, the Simply Money and Simply Tax programs they have been making available for only a S & H charge. CA has software covering just about the full spectrum of computer applications: word processing, data base, spreadsheet, etc.; some 13 major applications in all. Marty then gave a brief review of Simply Money and Simply Tax.

(1994.....Continued on page 9)

(1994.....Continued from page 8)

Simply Money is a program for recording and monitoring personal and business finances. It is a great deal more than a check writing program and has features which tie together all sorts of accounts and investments into a comprehensive package. In addition to writing checks and maintaining checking accounts, Simply Money handles credit card accounts, cash and savings accounts, credit lines and loan accounts, mortgages, asset and liability accounts, budgeting, and a wide variety of investment accounts, including stocks and mutual and tax-free funds which can be tracked and updated via modem. Business applications include accrual and cash basis accounting, payroll accounting and business reports. All of the accounts in a financial database can be linked together so that a single transaction affecting more than one account will be reflected in all accounts involved. Reports and graphs can be created quickly and easily for any of the accounts simply by clicking and dragging. In fact, except for the entry of data via the keyboard, all operations in Simply Money can be handled simply and easily with clicks and drags.

As a user of Simply Money I can tell you that it is simple, flexible and easy to use, though I will admit that I have not even scratched the surface of its capabilities. Requirements to load and use Simply Money are: A 286 or better machine, with at least 2 Mb of Ram (4 recommended), mouse, 5 Mb of hard disk space, DOS 3.1 or later, and Windows 3.1 or later. At the present time, it is available only as a Windows program.

Simply Tax is a comprehensive personal and small business tax preparation program. It, too, appears to be very customizable, comprehensive and easy to use. It allows entry of data for the tax returns via interview, questions and answer, or direct entry, all of which appear easy, direct and straight forward. Included are some 90 forms, schedules and worksheets; it is very comprehensive. Its many features include: Use of data from Simply Money, Quicken, Lotus Dollars & Sense and Managing Money, and uses Tax Exchange Format (.TXF) which allows import of data from other accounting programs; automatic overflow statements to accommodate more entries than IRS forms provide; a quick tour to familiarize the user with the program; a tax forecasting capability; data validation; tax preparation checklist; cross reference help; comprehensive context sensitive online help; depreciation history and reference tables; automatic links to appropriate form & line; averages of itemized deduc-

tions with an audit alert to notify of entries which exceed substantially the averages; tax tips to help identify ways of reducing tax liabilities; and a "what if" capability, to name just a few.

Simply Tax will print out all of the return forms ready to file. We are told that when printed on a good laser printer the forms will appear identical to the IRS forms. Alternatively, it has the capability and includes instructions to file the tax return electronically.

Simply Tax is available for Windows or DOS. Requirements for the Windows version of Simply Tax are: A 336 or better machine with 2 Mb of RAM (4 Mb recommended), 5.5 Mb of hard disk space, Windows 3.1. A mouse is recommended. Requirements for the DOS version are: Any IBM compatible PC with 640 K of RAM (500K available), 3.5 Mb of hard disk space, and DOS 3.0 or later. Mouse is optional. Just about any Epson/IBM/HP compatible printer can be used with either version.

Simply money can be obtained by calling 1800FREE-MONEY. Cost is \$6.95 to cover S & H. Simply Tax can be obtained by calling I8007FREE TAX. Cost is \$9.95, again for S & H. If ordering both programs, call the Simply Tax number.

Marty and Computer Associates, we THANK YOU VERY MUCH for your visit, for familiarizing us with your company, for a great presentation of two of your programs, and for the copies of Simply Money you donated. You have a couple of great looking programs in Simply Money and Simply Tax. We hope you will favor us with presentations in the future on upgrades to these programs, as well as introduce us to your other programs.

#### AND THE WINNER IS

Thanks to the generosity of Computer Associates, who donated several copies of Simply Money, and collections obtained by Harvey and Marylee at Comdex, there were some very nice door prizes. Those among us to have the good fortune to win are:

Larry T. Brooks	Simply Money
Cheryl Petty	Simply Money
Doug Rapphun	Simply Money
Dan Whitman	Simply Money
M. N. Martenez	Carrying case
W. F. LaMartin	2 cups

(1994.....Continued on page 10)

## Special Interest Groups

### Microsoft Access SIG

This SIG meets the first Tuesday of the month at the **Kate Jackson Community Center at 821 S Rome Avenue** in South Tampa at 6:30 PM. For information contact William LaMartin at [lamartin@tampabay.rr.com](mailto:lamartin@tampabay.rr.com), or Merle Nicholson at [merlenic@tampabay.rr.com](mailto:merlenic@tampabay.rr.com).

### Genealogy SIG

To be included on the TPCUG genealogy mailing list, contact Jenny Lind Olin at 960-5723, or [jlolin@tampabay.rr.com](mailto:jlolin@tampabay.rr.com).

### Visual Basic for Applications SIG

This SIG meets the **third Wednesday (this is a change)** of the month at the **Kate Jackson Community Center at 821 S Rome Avenue** in South Tampa at 6:30 PM. For information, contact William LaMartin at [lamartin@tampabay.rr.com](mailto:lamartin@tampabay.rr.com).

### Windows SIG

This SIG occupies the first 30 minutes of our monthly, regular meeting and is devoted to a general Windows and computing discussion. Kevan Sheridan moderates the discussion.

(1994.....Continued from page 9)

In addition, 2 people won monitor borders and at least 9 people won psychedelic sunglasses.

The meeting adjourned at about 8:30 PM. ◆

(Minutes.....Continued from page 7)

their way across reams of previously good data.

- Save data files to a CD frequently.

When any of the above fails or you are having difficulty accessing data, then LC-Tech can be your safe haven and lead you to recovery. Viruses and power failures cause most memory failures that LC-Tech software can restore for most users nine out of ten times.

Dave stated that LC Tech prefers to walk customers through their products rather than let them struggle alone. Customers are sold more on working from a strong knowledge base rather than being brought around after they may have stumbled. He encouraged potential customers to call (727) 449-0891 and be guided through the demo to be found at <http://www.lc-tech.com>. All are encouraged to call and have the demo demonstrated. LC-Tech is an international company well positioned in Europe and

the USA. LC-Tech has supplied significant recovery to many US Federal agencies. Once it took a week to restore one terabit of data for the US Navy, but most jobs are completed same day. The product is currently very stable and the current version was issued over two years ago. The first product was issued in 1996. LC-tech is a major recoverer of damaged physical drives as a depot of last resort as well as a

(Minutes.....Continued on page 12)

(Tiny Cars.....Continued from page 4)

it's done in much the way that you would play bumper cars at the fair. I enjoyed the games I played and will play it again in the future to relax, have a bit of fun and take a few minutes away from today's world. ◆



## Friends of the User Group

*We acknowledge the following for their support*

Marshall & Stevens  
Pepin Distributing Co.  
City of Tampa's Kate Jackson Community Center

*And these software and hardware vendors for their demonstrations and review software and contributions of evaluation software to our group*

Adobe Systems  
Borland  
CompUSA  
Corel Systems  
Intuit

Microsoft  
Office Depot  
PowerQuest  
RDI, Inc.  
Symantec

### RENEWING YOUR MEMBERSHIP?

WE CERTAINLY HOPE YOU WILL

MAIL YOUR CHECK AND ANY  
ADDRESS OR NAME CHANGES TO:

TAMPA PC USERS GROUP  
PO BOX 3492  
TAMPA, FL 33601-3492

\$25 Individual      \$35 Family  
\$60 Corporate = 3 employees + \$20 each add'l employee

**Go to our web site <http://www.tpcug.org> and click on the  
Join link to fill in an online membership application**

**Check the address label for your renewal month**

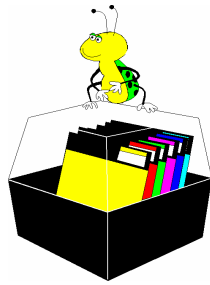
## MEMBERS' HELP LINE

Program	Code	Name	Time	Phone	Codes
Adobe Acrobat	AA	Cheryl Alexander	Mon - Fri 10:00am - 9:00pm	914-0008	HTM,PSP,WP
AOL	AOL	Larry Anders	Mon - Sun 6:00pm - 10:00pm	989-9119	AOL, ME, MW, FP, PSP
Computer general	CG	William LaMartin	Mon - Fri 9:00am - 9:00pm	251-3817	AA, FTM, IG, MOS, MP, VB, W95
Delphi	DE	Merle Nicholson	Mon - Fri 7:30pm - 9:30pm; weekends	879-3602	CG, DE, DOS, HG, HM, HP, VB
DOS	DOS	Jenny Lind Olin	Mon - Sun 8:00am - 10:00pm	960-5723	ME, MW, PAF, Q, WP
Family Tree Maker	FTM	Don Patzsch		689-8662	CG
Hardware general	HG	Mary Sheridan	9:30am - 9:00pm	988-6480	AOL, CG, DOS, HG,IG, MW, Q, W95, W98
Hardware Modem	HM				
Hardware Printer	HP				
HTML coding	HTM				
Internet general	IG				
Micrografx Graphics Suite	MGS				
Microsoft Access	MA				
Microsoft Excel	ME				
Microsoft FrontPage	FP				
Microsoft Office Suite	MOS				
Microsoft Publisher	MP				
Microsoft Visual Basic	VB				
Microsoft Word	MW				
Networking	N				
PAF	PAF				
PaintShop PRO	PSP				
Quicken	Q				
Windows 3.1	W3				
Windows 95/98	W95/98				
Windows NT	WNT				
WordPerfect	WP				

We encourage other members to add their names to the list of those willing to assist fellow members with their computer problems. Contact William LaMartin to add your name to the list.

**Tampa PC Users Group, Inc.**

P. O. Box 3492  
Tampa, FL 33601-3492



**First Class Mail**

- Member: Your membership is up for renewal
- Vendor: Your product was reviewed on page \_\_\_\_

*(Minutes.....Continued from page 10)*

front runner for remote data recovery utilizing the LC-Tech software. A true endorsement of the product is that the latest camera memory cards, namely Ultra-Extreme cards, have the LC-Tech product rescue-pro installed by the card manufacturer. Photo recovery currently keeps LC-Tech real busy. Their local lab-office is located just north of Countryside mall in Clearwater and employs ten at that location. The LC-Tech products are all downloadable from their web site and are priced as follows: RESCUE.PRO for \$39.99, PHOTORECOVERY for \$39.99, FILE RECOVERY PRO for \$99.95.

Our Thanks go to Dave Dabney for a most interesting and valuable presentation enjoyed by all.

Our door prize winners were John Witmer, who won the Encarta Reference Library CD, and runners up Merle Nicholson and Bob Davis who, won TPCUG T-shirts. ◆

