



September in
Tampa

A Monthly Publication of the Tampa PC Users Group, Inc.

Vol. 16 No. 9 September 2003

Meeting

Presentation

Meeting Preview: The presentation topic was not available at press time. Preceding the presentation, Kevan Sheridan will conduct the usual half-hour Windows SIG.

Surprise Again

Wednesday, September 10, 2003
6:30 PM
Art Pepin Hospitality Room
Pepin Distributing Co.
6401 N 54th St
Tampa, Florida

Editor's Comments

By William LaMartin, Editor, Tampa PC Users Group
lamartin@tampabay.rr.com

INSIDE THIS ISSUE

Meeting Preview	1
Editor's Comments	1
Minutes	2
Aiptek DV2	3
Recycling	5
Links	5
Wireless Home Network	6
Looking Back to 1993	8
SIG Report	10
Members' Help Line	11
Map	12

Worms August has been a bad month for computer worms. First there was the Blaster which exploited a flaw in DCOM RPC using TCP port 135 in Windows XP and Windows 2000. Microsoft had supplied a fix over a month back, but many people had not applied it, including several of our members. You really need to have Windows automatically check for updates whenever you go online. The second worm, SoBig.F, has been clogging up email inboxes for the past 10 days or so.

I first came into contact with SoBig.F while traveling. The

(Comments.....Continued on page 4)

October Meeting Topic: To be announced -- Check our web site.

** OFFICERS **

President: Kevan Sheridan (president@tpcug.org)	988-6480
Vice President : John Witmer (JWITMER@Pepindist.com)	963-3760
Treasurer: Mike Hodges (mphs@aol.com)	962-2114
Secretary: Peggy Pulliam (pegrance@yahoo.com)	253-0438
Member at Large: Mary Sheridan (mcpease@mindspring.com)	988-6480

APPOINTED (Volunteers)

Editor: William LaMartin (lamartin@tampabay.rr.com)	251-3817
Librarian: Larry Anders (Larry@AndersNet.com)	989-9119
Programs: Mary Sheridan (mcpease@mindspring.com)	988-6480
Membership: Mike Hodges (mphs@aol.com)	962-2114

Home Page <http://www.tpcug.org>

Bits of Blue is published by the Tampa PC Users Group, Inc., a State of Florida registered non-profit corporation, to provide educational information about personal computer systems to its members. Our mailing address is P. O. Box 3492, Tampa, FL 33601-3492.

However, for business concerning this newsletter, Bits of Blue, please contact the Editor, William LaMartin, at 821 S. Boulevard, Tampa, FL 33606-2904; 813-251-3817; lamartin@tampabay.rr.com.

Technical information found in this publication is not necessarily compatible with your hardware and software; plus other errors or misprints could occur from time to time. Therefore, the use of programs, commands, functions or anything of a technical nature appearing in this publication will be at your own risk.

Contributors are asked to submit articles as an ASCII, Microsoft Write, Microsoft Word, or Word Perfect file to the editor at 821 South Blvd., Tampa, Florida 33606-2904 or to lamartin@tampabay.rr.com.

Permission to reproduce portions which are not specifically copyrighted is given to other computer users groups for nonprofit use. Reprints must be unaltered; proper credit given to the author and publication; and a copy of the publication must be sent to the attention of the Bits of Blue Editor at the club address. All other reproduction is prohibited without the specific written permission of the original author.

The use of trademarked and copyrighted names herein is not intended to infringe upon the owner's rights but rather to identify the products for the enlightenment of our users.

Commercial advertisements will be accepted. For rate information please contact the Editor by one of the above listed methods.

All advertisements must be prepaid by check payable to TPCUG, be in camera ready format (actual size, black ink on white paper), and be submitted on or before the 20th of the month preceding the month of publication. Commercial advertising is usually limited to 25% of the total space of an issue. The Editor reserves the right to hold ads if the total space for ads exceeds this limit or if they are not received on time.

Members may insert non-commercial ads at no charge with the following limitations: no more than 4 ads per member per year; no more than 40 words (240 bytes including spaces); must be camera ready copy or an ASCII file on diskette or as an attachment to an email message to the Editor. Those wishing to place ads are to contact the Editor, William LaMartin, at (813) 251-3817 for space availability and for further information.



Member of
The Association of
Personal Computer User Groups

Minutes of the August Meeting

By Peggy Pulliam, Secretary,
Tampa PC Users Group
pegrance@yahoo.com

This month's meeting started on time with Mike Hodges officiating.

We were reminded to keep our e-mail addresses up to date so important messages don't go astray. The newsletter is online too! [Http://www.tpcug.org](http://www.tpcug.org) Newsletter article submissions are encouraged, so if you have information to share on a likely topic, send them to the editor.

Remember that the Special Interest Group meetings are held at the Kate Jackson Community Center in Hyde Park on the first Tuesday and the third Tuesday of the month.

Our discussion ensued about viruses and how they can get in through a buffer overrun. Microsoft supplies critical updates at the Windows' update site. Use them to seal the holes the viruses are finding.

Mike conducted a survey of those present as to programs for future meetings. The subjects are: Scanning, Excel, PowerPoint, Notebooks, Internet Telephone Calls, Digital Photography, Outlook, Video Editing, Photo Albums, Databases, Microsoft Word. There were a few others, too, but these should keep us going for a while and also branch out into other future meetings.

We learned about a Google Tool bar which kills pop-ups. Bruce Register told us about his experience with the Blaster worm. Many more topics were covered, and it was quite an informative meeting.

Bruce Register is the happy winner of the door prize "Wipe Drive", and Jim Purcell won a T-Shirt.

After the meeting ended, some of the group went on to meet later where there was food and continued talking for a while longer. ♦

AIPTEK DV2

By Bob Lafave, Tampa PC Users Group
boblala@ij.net

The AIPTEK DV2 is a multi-functional camera and voice recorder that does four tasks: Digital still camera mode (takes 1280 X 1024 X 24Bit jpeg), PC camera mode (Web Cam), AV recording mode (avi digital files), and Voice annotation mode (voice recorder in wav format). Sounds like a lot for this little gadget, but it does do them all. The web site at <http://www.aiptek.com/index2.php> has all the specifications for any surfers to view. First, the price was great. For \$89.99 plus shipping, I received not only the DV2 but also a digital watch that they are currently selling for \$19.99; still the DV2 is worth much more. The still mode jpeg's are really nice. I can place them as wallpaper, and they look great. They are of equal quality to many other pictures that I have found over the years on web sites. The pictures are true 1.3 mega pixel resolution. With 16MB of memory built in, you get only 15+ pictures, but the DV2 can take an optional 512 MB Compact Flash card to increase that number to over 600 before changing cards. The flash card is also useful if you are going to take digital movies. The 16MB of built in memory gives you only about 2-3 minutes of video with sound. Add the card and you can get almost 100 minutes of digital avi with sound. If used for a voice recorder only, you get about 30 minutes with the 16MB of memory and almost unlimited with a memory card. The sounds are not recording quality by any means, but, if used for reminders or note taking, the quality is fine and, when taking videos, is acceptable.



Copyright ©Aiptek Inc.

During a rainstorm, I recorded the rain, wind, and thunder, and it can be heard along with my commentary of what was taking place. Lastly the DV2 is a web cam that is better in quality than the Logitech web



cam that I have. There is separate software called *Mega DV Manager*. This picture shows the web cam mode looking out a window. You can take still pictures or AV recording from this application directly to the computer.

When the DV2 is used as a web cam, you are connected by USB; this is really convenient at home, especially if you get a USB extension for added range. This is the only software that needs to be installed for the use of the DV2, but six more programs are included. The programs are:

- Microsoft NetMeeting, for internet communication.
- CyberLink PowerDirector Pro, to edit and create movies on CD's.
- CyberLink Media Show SE, for making animated slide shows.
- CyberLink VideoMail, to create and send video emails.
- Ulead Photo Express, to edit and create illustrations and photos.
- Ulead Photo Explorer, for visual file management.

I could write individually about each of these programs, but I think it would be easier and provide more information for those who are interested to visit:

<http://www.gocyberlink.com/english/index.jsp> for descriptions of CyberLink programs and <http://www.ulead.com> for Ulead programs information. What I will say is that there is very little that you will not be able to do with the still images or digital AV that you take using the included software.

(DV2..... Continued on page 4)

(DV2.....Continued from page 3)

If priced separately, the software itself is worth far more than the cost. Some programs are older versions or OEM versions.

Overall, for the price you get a great multi-functional camera with a LCD display with easy to follow instructions that allows you to record most any choice you can make. Yes, you do have to purchase a Compact Flash card to extend the features, and this will cost as much if not more than the DV2, but I think it is a well thought-out product. Between the DV2 and its included software, what more could you ask for.

The AIPTEK DV 2 is also sold at Best Buy and is where I found it when browsing the shelves. Their cost is \$99.99 including tax. AIPTEK products are sold at Circuit City also. ◆



(Comments.....Continued from page 1)

first day of the trip I didn't bother to check my email. The second day I had about 30 messages with the worm attached. The next day there were about 120 with the worm, and the following day after only 15 hours between checks, there were around 150 bad messages. For the most part RoadRunner was now replacing the attachment with a message of their own to the effect that they had deleted the attachment since it was infected with the SoBig.F worm. Needless to say, on a dial up connection I have to use when traveling, it was a slow go downloading all of them and deleting them. After that, the messages sort of tapered off

On the day I received the 150 or so messages in less than 15 hours, I think it was Thursday, August 21, I was checking out my daughter's computer setup in her dorm room when I noted that I couldn't go anywhere on the WWW. I then checked email, and it worked. I checked that I could go to the university's main page, and it worked. But you could-

n't get anywhere outside the university. I then tried to ping several outside sites like tpcug.org, IMB.com and Microsoft.com. No luck, the university was cut off from the world. I called the campus computer help line and was told that they were taking very heavy traffic. Apparently the worm was jamming everything. It didn't get back to normal until the next day.

On returning to Tampa, I had to face all those bad emails again, since while traveling I have the email program leave the mail I read on the server. But I downloaded them all and deleted them.

It was relatively quiet for a couple of days, then there was a bit of heightened activity of just short of 100 wormy emails over a 24 hour period. Then came a day or so of next to nothing on the worm front. And then, all hell broke loose with over 350 such messages in a day. After that the worm infected email tapered off to almost nothing. And that is where things stand now.

This sort of thing is getting to be a major disruption for me. 350 bogus emails in a day takes up your time. The odd thing is that they all came in on my RoadRunner account and none on my Earthlink account, which is the one that gets the greatest number of Spam messages.

The only funny part of it was all the messages I received from U. S. Senators, bogus ones at first caused by the worm, then later legitimate ones to me as replies to bogus ones sent to them by the worm with my email listed as the sending email. Of course, the replies were pro forma and stated that they were too busy to respond to me individually due to security reasons or the large volume of messages received by their office and that I should write them using the regular mail.

Printer To go with the Gateway we bought for my daughter to take to college, we also purchased an HP 2175 all-in-one printer. That seemed like a good idea since it gave her both a scanner and a printer. Everything seemed fine with it both here in Tampa and at college. However, the evening before we

(Comments.....Continued on page 7)

Electronic Recycling Day

By Mike Hutchison, TPCUG
mmyankee@ij.net

Here's is a reminder about the County's Household Electronics Collection Day. It is on October 25, 2003, 8 AM to 2 PM at the East County Collection Center, CR 579, 1/4 mile North of I-4 Exit 10.

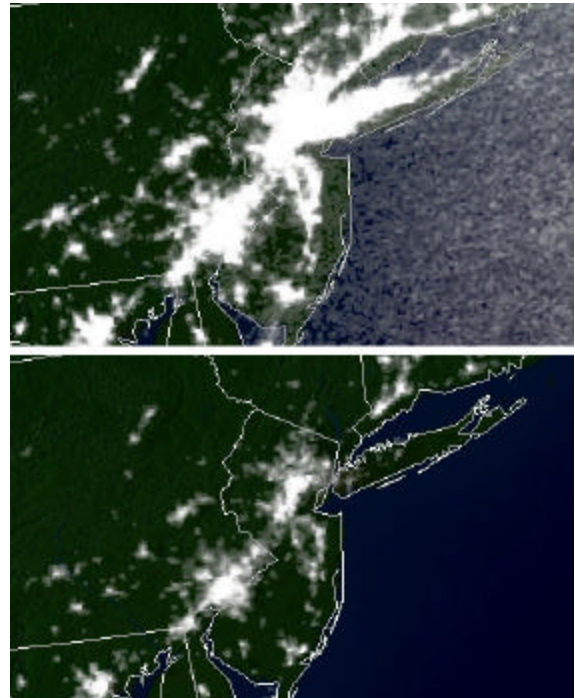
They are accepting TVs, VCR's, computers and computer components, microwave ovens, cell phones, telephone, power supplies (one presumes this would cover cell phone batteries) and other small household appliances at this collection.

NO Commercial/Business electronics accepted.

For schedules and other information about Solid Waste Management Department events, contact the SWMD at 813-272-5680 or visit the website: <http://www.hillsboroughcounty.org/solidwaste/chemical.html> for Residential Collection events, or <http://www.hillsboroughcounty.org/solidwaste/cesqg.html> for Commercial/Business collection events.

(Above was excerpted from The Recycling Planet, a quarterly report put out by Hills. County)

Internet Picture of the Month



Blackout: Before & During

Aug. 14 & 15, 2003 cropped photos from the NOAA site, <http://www.noaa.gov/>. The satellite images were taken before and after of the historic blackout of the Northeastern United States. These cropped photos center on the New York City area. "NOAA processed the night lights data taken by the Defense Meteorological Satellite Program (DMSP). NOAA archives the data from the satellite."

September's Interesting World Wide Web Locations

Tampa PC Users Group (That's us)
 Urban Legends Reference Pages
 National Oceanic and Atmospheric Administration
[New York Times' On this Day](#)
 The Atlantic Online

<http://www.tpcug.org/>
<http://www.snopes.com/>
<http://www.noaa.gov/>
<http://www.nytimes.com/learning/general/onthisday/>
<http://www.theatlantic.com/>



Some of these links will join the many already on the Links page at our web site, where you need only click on the name.

Wireless Home Network

By Merle Nicholson, Tampa PC Users Group
merlenic@tampabay.rr.com

I've added wireless capability to put my notebook wirelessly on my home network. I can use the notebook anywhere inside my house and in my backyard, too. My spouse wants me to test it in the detached garage. I haven't asked why yet.

I've had a home network for several years and been very happy with its features and functions. I've had Roadrunner Internet access for several years. I managed to be on the RR network soon after it was available in Tampa, and I quickly set up my home network with Sygate Internet-sharing software, similar to the Windows Internet sharing that is now available. A year or so ago I replaced the Internet sharing with a Linksys Cable/DSL router, and I've been very happy with it, especially for its built-in firewall. It has a four-port switch to handle my network. I do have an older hub attached to provide a couple more ports.

The hardware firewall in the Linksys is wonderful. I was able to remove my software firewall and greatly improve the performance of that PC.

I have four hardwired computers in my home. One, my oldest, just manages my telephone now as its only function. It had served other functions over time, like holding online backups, and it originally did the Sygate Internet access. It's just a P-166. Its function now is to answer and hang up on anyone calling in with an unknown caller ID. It blocks people and businesses that we have identified and announces who is calling for everyone we do know. I love the hang-up part.

Then my wife and I each have our personal computers, and I have a Windows 2000 machine now collecting online backups from all the other machines and running my SQL Server. But we also have a one-year-old notebook that is mostly unconnected. When I want to update Windows or anti-

virus signatures or move files from other computers, I set it up on my office workbench where I have a spare network cable to the hub. It came home to me that I needed to improve it when I was watching the Wimbledon tennis matches in the living room, that I had a lot of down time that I could be using productively if only I had my notebook. I have a couple of software projects going on that I'd like to be working on. So wireless is the way to go if I can get it cheaply enough.

I felt that since I don't have an overpowering reason to do this, I needed to do it cheaply. That eliminated the new high-speed "G" systems. So it had to be the older "801.11b" 11Mbps system because I can find them on sale right now. I got a D-Link Cable/DSL router for \$40 after rebates and a NetGear for \$30 outright, no rebates, both from Office Depot. No other costs except sales taxes.

The Router:

The router I got was not ideal. Remember that I have a Linksys router, and I don't want to disturb it. The ideal device is a "Wireless Access Point" device. An Access Point is designed to do exactly what I need; add wireless to my network. But guess what ... they're \$100! No way! So I got this wireless router.

How I hooked it up:

The new router has a "Wan" port where you are supposed to cable your DSL or Cable Modem. I've left this empty. It has four switched ports where you can plug in Ethernet cables to hardwire computers directly. I picked one of these ports and cabled it to a similar port on the Linksys router, using a crossover cable. The port I picked on the Linksys is the one I was using for the hub. I disconnected and retired the hub. So I have six ports for computers now, three on each of the routers because the interconnect cable between them uses one each.

It doesn't work .. yet:

OK, right off, some of the network isn't working. So I have to fix it. The problem is, I have two competing routers. A router's function is to provide firewall protection and also to be a DHCP. A DHCP assigns

(Wireless.....Continued on page 7)

(Wireless.....Continued from page 6)

an internal IP address to each of your computers, and you can't have two doing this at the same time. Also, both routers have the same fixed IP address. You access the router's setup with any web browser. The only PC working was the one that was hard cabled to the new router. The first thing I did was change the new router's fixed IP address. Then I started disabling stuff in the setup. The most important thing was to disable DHCP. Then each of the computers worked after releasing and renewing each computer's IP address using either Winipcfg (Win 98/ME) or IPConfig (Win/XP and Win/2000).

Finally:

It really works well. 11Mbps really is fast enough. Internet access is still very fast. When I think about it, my network started out to be 10Mbps and bumped up to 100Mbps only a year ago when I bought the Linksys. I replaced the PC network cards to 10/100 about the same time. The only problem I have is that, for the moment, I don't know the IP address of the new router, so I can't configure it any further if I wanted to without resetting it. I don't know why this is, but my guess is that it doesn't have one any longer. I accessed the configuration of the Linksys and looked at the DHCP client list. All the computers were there. I don't see any practical disadvantage since the new router has an external reset switch that will set everything to the factory defaults, and I can start over again. ♦

(Comments.....Continued from page 4)

were to come back to Tampa, she called to say that the printer was producing a message on the computer to the effect that it might be running low on ink. Well, we hadn't printed much more than a dozen pages to see that it worked OK. However, I recalled that in the description of the printer, there was a statement that it came with starter cartridges. 12 pages doesn't seem like enough for even starter cartridges, but what the heck; off to the local CompUSA to buy, for about \$50, a replacement

pack of a black cartridge and a color cartridge. Then to the dorm to install the new cartridges, and guess what. You know what: The same message appeared when you wanted to print. Fifty dollars that shouldn't have been spent

A quick check of the HP site said that all that really needed to be done to be finished with the spurious message was to reset the printer's mind by turning on the printer (it has to be on to make the cartridges accessible), removing the cartridges, removing power from the printer for at least five seconds, returning power to the printer and replacing the cartridges. I am sure you can guess what the result of that was--same error message. But it got worse.

When I put power back to the printer and put in the first cartridge it started trying to print before I could put in the second cartridge. So I had to unplug it so as to keep it from printing without the second cartridge. Perhaps there was a print job in the computer's print queue. I don't know. But it seems to me it shouldn't try to print with the holder for the second cartridge still open.

I finally tricked it into letting me put in both cartridges by not closing the lock on the first until I had the second cartridge also inserted. Then I pushed them both closed at the same time. This second problem made me think there is something wrong with a sensor for the second cartridge.

What to do? Nothing. The printer was bought in Tampa, and the receipt was in Tampa so I couldn't take it to the local CompUSA. And once back to Tampa, I didn't want my daughter to have to deal with returning it to CompUSA (by then the time to do that might have already passed), and I didn't want her to have to send it back to HP since she would have no printer and anyway the box it came in was in Tampa.

The printer prints fine, and the message can be made to go away for a month. After a month, she can make it go away for another month, and as with her previous printer, she can tell when it is running

(Comments.....Continued on page 10)

Looking Back to 1993

From the September 1993 *Bits of Blue*

Secretary's Report

MINUTES OF 8/11/93 Meeting and PERSONAL COMMENTS

By: Jim Clark

Another BIGGIE?! Yes, if you weren't at this meeting, you missed another biggie. We had a presentation on one version of probably the most widely used word processor — Word Perfect 6.0 (DOS) — made by the inimitable John Johannsmeyer who has a special knack of getting across a lot of info in a very enjoyable way. And, we had a vote on our Articles of Incorporation (AOI) to change the name of our group. Although we had a good crowd, it was not the wall-to-wall crowd J had expected for this event. It was a productive and enjoyable evening.

CLUB NEWS

- **Name Change:** Harvey explained the several reasons the Board of Directors (BOD) felt that a change in our name was necessary: 1) Our name is so similar to other groups in our area that we are often mistaken for them; 2) Our present name incorrectly implies that only persons using true IBM PCs are eligible, whereas in reality we are open to users of any PC (as well as those that don't use computers at all, but have an interest in them); 3) Because of the similarity of names, some distributions from the computer industry intended for our group are often sent to one of the other groups; 4) We are applying for non-profit status with the IRS and it is important that our name reflect our true situation — membership in our group is not limited to a select group of people, but is open to all.
- **The BOD had agreed upon and proposed to the membership that our name be changed to "Tampa PC Users Group".** There were other ideas proposed from the floor during discussion, but in the end it was agreed that this name would probably meet our needs the best; it reflects our openness, and at the same time would also help keep our established identity in the industry. A motion to change our name to "Tampa PC Users Group" was made and seconded. A vote was held, and the motion carried without opposition.
- **Financial Reports:** A motion was made to incorporate into our newsletter a financial report to let members know what our financial status is. The motion did not specify a time table for such reports. It was noted that financial reports are available for review by any and all of our members at all of our meetings and that for such reports to be included in the newsletter frequently would consume valuable space and create additional work on the volunteers serving the organization. Considerable discussion ensued as to the need for such reports and, if needed, the frequency of them. An amended motion was pro-

posed to publish a financial statement, consisting of an Income Statement and a Balance Sheet, during the first quarter of the calendar year with an as-of date of the last day of the previous year. The motion was seconded and carried without opposition.

INDUSTRY NEWS

- **CorelDraw Update:** A number of bugs have shown up in the recently released CorelDraw 4.0. To rectify most of these problems, CorelDraw has developed and is distributing a free update. If you are an owner of CorelDraw and have registered, you should receive your update automatically. If you have not registered, you will have to call CorelDraw at 1-800-836-DRAW to get your update.
- **Word Perfect for OS/2:** Word Perfect Corp says they are now shipping this version of WP.
- **Stacker/Novell Agreement:** An agreement has been reached that will incorporate Stacker software in future releases of Novell and DR-DOS. Inasmuch as Stacker seems to be the most popular disk compression software, this agreement will no doubt expand Stacker's share of the disk-compression market and should enhance the value of Novell and DR-DOS programs.
- **MS Access 1.1 maintenance upgrade is out.** It can be purchased from MS directly for \$19.95, or call MS for a coupon which will allow purchase from local retailers for \$14.95.

PRESENTATION — Word Perfect 6.0 (DOS)

John Johannsmeyer, area manager for Word Perfect Corporation, was on hand to give an overview presentation of WP 6.0 (DOS). It is a very powerful program and no one could review all of its features in the limited time available, but John did cover a bunch of them—and I shall be even more brief here.

To start with, WP 6.0 is very similar in many ways to WP 5.1 — that is, it does all of the things 5.1 does (plus a bunch) and those things can be accomplished in pretty much the same way as 5.1 if one so desires. Some of the key combinations are different, but if one uses phonetics they are very much the same. V/P 6.0 can be operated in a variety of ways, from a clean screen that would remind you of all of the earlier versions of WP, through pull-down menus on the screen, to a Windows-like operation, complete with user-definable tool bars. One does not have some of the capabilities with 6.0 (DOS) that are available in Windows, such as DDE, but it appears to offer all other benefits of a Windows-like graphical interface. Like Windows, WP 6.0 makes use of all extended and expanded memory installed on the computer and otherwise available for use.

Among the major capabilities offered in WP 6.0 is a very capable spreadsheet built right in. This spreadsheet provides over 100 functions, including all of the ones used most often by most spreadsheet users. And the spreadsheet is indeed very nice. Also included is an efficient send-fax capability so that one can send faxes from within WP 6.0 (the host computer must, of course, otherwise have a fax capability). And, the

(1993.....Continued from page 8)

desktop publishing capability of WP 6.0's recent predecessors is still available -- but it has been enhanced and made more powerful than ever. Among the many other features of WP 6.0 are:

- WP 6.0 can be operated in text or graphics modes; text mode takes less memory and looks much like WP 5.1 on the screen; and graphics mode which takes more memory and runs more slowly, but gives full benefit of the graphical interface (i.e., WYSIWYG).
- Up to nine documents can be opened and working at one time. This makes transferring information between several documents (up to nine) very easy.
- Word processing has been enhanced with features such as Grammatik V grammar checker now built in, and drag and drop editing of text. And, 6.0 will import from all of the popular major word processors.
- Provides a conversion macro to convert on the fly documents from previous versions of WP.
- Macros from WP 5.1 are convertible and creation of macros is easier.
- A comprehensive and detailed table creation and control capability - a very powerful and versatile feature. One can create and modify a table structure in just about any way I can imagine with just clicks of a button, and embed formulas as desired.
- Good control of graphics compared to other word processors, including scaling and drag-and-drop moving. It also allows the choice of block wrap of text around graphics, or contour wrap with a click of a mouse button The program will import some 15 different graphics formats, including all of the most popular.
- Another feature that is particularly "nice" is the Watermark. One may import a graphic in any of the 15 formats supported and make it a "watermark" — a graphic that is printed lightly to become a background to any printed document.
- Enhanced, powerful desk top capabilities, including easily set up and controlled column layouts, with any combination of single and multiples allowed on the same page. Automatic text flow between columns and balanced columns are available.
- Some of the other features are: Extensive documentation and context-sensitive online help; drag-and-drop text editing; spell checker; thumbnail preview of up to 32 pages at one time; document length limited only by space; envelope printing, with bar-code capability; hypertext (electronic referencing for documentation); supports full color printing; embed sound in any place desired in a document, with the sound becoming a part of the document file (assumes a sound capability built into the computer); uses Adobe and Bitstream Speedo fonts, with third party software providing True Type capability as well; and many, many more.

Requirements: John says that WP 6.0 (DOS) will run in text mode on a 286 machine. A 386 with 2 MB of RAM will allow operation in text or graphics modes; more RAM will give faster operation. (A 486SX25 laptop was used for the demo, and it worked very well.) The program needs about 420K of free RAM, after all TSRs are loaded. A minimum load of the program uses about 7M of hard disk space-- loading all features takes about 14 MB.

Costs: List price of the program is \$495. Upgrade from WP 5.1 lists at \$129.95, but has a street price of around \$89. A competitive upgrade is available for a little more, but one must be upgrading from a competitive program with a list price of at least \$395.

Word Perfect Corp is implementing a program called Easy Move. This program will allow a purchaser of WP 6.0 (DOS) to obtain the software for the Windows version for \$29.95, or \$59.95 for the program with complete documentation. This "Easy Move" applies to lateral versions and/or earlier versions, but not to later versions; that is, a 6.0 licensee could Easy Move on any 6.0 versions (Windows, DOS or OS/2), or any 5.X versions, but could not do the same on 6.1 or later. John emphasized that one is not purchasing an additional license, but is only expanding an existing license. Hence, if one owned a license for one program and Easy Moved on another, and subsequently gave or sold one version, that person will have sold or given away his license for both versions.

Word Perfect Corporation and John Johannesmeyer, many thanks for an excellent presentation of your very powerful new version of Word Perfect for DOS. It is truly an impressive and powerful program, and, John, your presentation was both informative and entertaining, as usual.. MANY THANKS!

AND THE WINNER IS

Thanks to the generosity of Microsoft Corporation (who donated a copy of Microsoft Access), our own Sunshine Computer (who donated several peripheral items), and Word Perfect Corporation (who donated several WP T-shirts), along with the 50/50 cash drawing, there were some very nice raffle prizes. Those among us to have the good fortune to win are as follows:

Jerry Inman	WP T-shirt
Ed Buzza	WP T-shirt
George Pollak	WP T-shirt
Melvin Flynn	WP T-shirt
Kevan Sheridan	3.5" disk case & 25 diskettes
Frank Gallio	FD cleaning kits
Phillip P. Ficarrotta	Mouse Pad
R. A. Friedel	Microsoft Access
Don Keeney	50/50 (\$54) ◆

Special Interest Groups

Microsoft Access SIG

This SIG meets the first Tuesday of the month at the **Kate Jackson Community Center at 821 S Rome Avenue** in South Tampa at 6:30 PM. For information contact William LaMartin at lamartin@tampabay.rr.com, or Merle Nicholson at merlenic@tampabay.rr.com.

Genealogy SIG

To be included on the TPCUG genealogy mailing list, contact Jenny Lind Olin at 960-5723, or jlolin@tampabay.rr.com.

Visual Basic for Applications SIG

This SIG meets the third Tuesday of the month at the **Kate Jackson Community Center at 821 S Rome Avenue** in South Tampa at 6:30 PM. For information, contact Merle Nicholson at merlenic@tampabay.rr.com, or William LaMartin at lamartin@tampabay.rr.com.

Windows SIG

This SIG occupies the first 30 minutes of our monthly, regular meeting and is devoted to a general Windows and computing discussion. Kevan Sheridan moderates the discussion.

(Comments.....Continued from page 7)

out of ink by observing the results of printing.

However, this is just another reinforcement of my feeling that HP is putting out products lower in quality than they did a few years back. I also have a newer HP flatbed scanner that cost \$300 a couple of years back that has lost its ability to scan photographic negatives with the HP software. HP says that it is a hardware problem and nothing can be done.

The new HP 2175 printer/scanner cost \$200. My first HP flatbed scanner cost \$1,000 in 1994 and my second HP laser printer cost \$1,400 in 1995. So at that time I had a printer/scanner combination that cost \$2,400. Perhaps you can not make such a thing that is rock-solid reliable for \$200.

Wireless Access Merle Nicholson has an article about setting up a wireless home network in this newsletter. Like Merle, I have had a home network working through a router for a number of years. With the addition of my daughter's new laptop with wireless connectivity, I wanted to allow it to connect wirelessly to the network, although it also had a regular Ethernet connection we could have used to connect it with network cable.

My method of accomplishing this was to purchase a Linksys Wireless-G Access Point (model WAP54G) and connect it to one of the ports on my already existent Netgear router.

To install the Access Point, you simply plug it into the network and run a piece of software from a CD to do a minimal configuration. One thing you should do, in my opinion, at this point is set the Wired Equivalent Privacy (WEP) encryption for the wireless network. This will generate a WEP key. You will then need to enter this key into the wireless setup of any computer that wants to access your network wirelessly. If I hadn't done that, anyone could stand near my house with a laptop with wireless connectivity and log into my network.

With the WEP key entered into the laptop's wireless setup, the laptop was connected at 54 Mbps, which is the correct speed of the new g wireless standard, not as fast as the 100 Mbps of my hardwired LAN but faster than the old wireless b standard of around 11 Mbps.

As anyone who has tinkered with routers know, you are supposed to be able to configure them by pointing your web browser to their address on the local network. The address for my Netgear router is 192.168.0.1. Linksys routers have an address like 192.168.1.1, I think. Similarly you can configure (in more detail than the software program allowed) the Linksys Access point. The default address is 192.168.1.245, and I could not reach that with my browser. A little thought told me to go back into the software program for configuring the access point and change the address of it to 192.168.0.245, so that it was "on the same page" as the Netgear router. Once

(Comments.....Continued on page 12)

Friends of the User Group

We acknowledge the following firms for their support

Marshall & Stevens
Pepin Distributing Co.

And these software and hardware vendors for their demonstrations and review software and contributions of evaluation software to our group

Adobe Systems
Borland
CompUSA
Corel Systems
Intuit

Microsoft
Office Depot
PowerQuest
RDI, Inc.
Symantec

RENEWING YOUR MEMBERSHIP?

WE CERTAINLY HOPE YOU WILL

MAIL YOUR CHECK AND ANY
ADDRESS OR NAME CHANGES TO:

TAMPA PC USERS GROUP
PO BOX 3492
TAMPA, FL 33601-3492

\$25 Individual \$35 Family
\$60 Corporate = 3 employees + \$20 each add'l employee

Go to our web site <http://www.tpcug.org> and click on the
Join link to fill in an online membership application

Check the address label for your renewal month

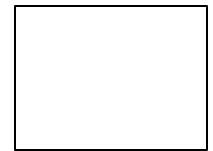
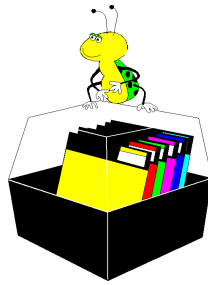
MEMBERS' HELP LINE

Program	Code	Name	Time	Phone	Codes
Adobe Acrobat	AA	Cheryl Alexander	Mon - Fri 10:00am - 9:00pm	914-0008	HTM,PSP,WP
AOL	AOL	Larry Anders	Mon - Sun 6:00pm - 10:00pm	989-9119	AOL, ME, MW, FP, PSP
Computer general	CG	William LaMartin	Mon - Fri 9:00am - 9:00pm	251-3817	AA, FTM, IG, MOS, MP, VB, W95
Delphi	DE	Merle Nicholson	Mon - Fri 7:30pm - 9:30pm; weekends	879-3602	CG, DE, DOS, HG, HM, HP, VB
DOS	DOS	Jenny Lind Olin	Mon - Sun 8:00am - 10:00pm	960-5723	ME, MW, PAF, Q, WP
Family Tree Maker	FTM	Don Patzsch		689-8662	CG
Hardware general	HG	Mary Sheridan	9:30am - 9:00pm	988-6480	AOL, CG, DOS, HG,IG, MW, Q, W95, W98
Hardware Modem	HM				
Hardware Printer	HP				
HTML coding	HTM				
Internet general	IG				
Micrografx Graphics Suite	MGS				
Microsoft Access	MA				
Microsoft Excel	ME				
Microsoft FrontPage	FP				
Microsoft Office Suite	MOS				
Microsoft Publisher	MP				
Microsoft Visual Basic	VB				
Microsoft Word	MW				
Networking	N				
PAF	PAF				
PaintShop PRO	PSP				
Quicken	Q				
Windows 3.1	W3				
Windows 95/98	W95/98				
Windows NT	WNT				
WordPerfect	WP				

We encourage other members to add their names to the list of those willing to assist fellow members with their computer problems. Contact William LaMartin to add your name to the list.

Tampa PC Users Group, Inc.

P. O. Box 3492
Tampa, FL 33601-3492



First Class Mail

- Member: Your membership is up for renewal
- Vendor: Your product was reviewed on page ____

(Comments.....Continued from page 10)

that was done, I could access it with the browser.

With the wireless access point in my computer room on the SE corner of the house downstairs, the laptop picks up the network fine in the kitchen which is about 50 feet away and through one or two walls. When I go upstairs to the back bedroom, which would be on the NW corner of the house upstairs, it still works, but the speed is reduced to 5.5 Mbs from 54 Mbs. If I go into the downstairs room below that bedroom it works at 54 Mbs--if I face the direction of the access point while holding the computer. That distance is about 50 feet and has two walls to go through. The windows have metal frames and dividers too, so that may make a difference. If I face away while working with the computer it appears to lose the connection occasionally.

So it appears that it would be better to put the access point in the middle of the house. Possibly even upstairs in the middle. I will try that when I have a lot of time to play with things. ◆

