



May in Tampa

A Monthly Publication of the Tampa PC Users Group, Inc.

Vol. 13 No. 5 May 2000

Meeting

**Mike Galvin of Office Depot
Speaking on Scanners**

**May 10, 2000
6:00 PM**

**Museum of Science
and Industry
4801 E Fowler Ave.**

Meeting Preview: At the May meeting we will have a presentation by Mike Galvin from Office Depot on scanning. Mary Sheridan, as usual, will conduct a 30-minute Windows discussion at the beginning of the meeting.

President's Message

*By Mary Sheridan, President, Tampa PC Users Group
mcpease@mindspring.com*

Happy Springtime! Attendance is improving at our monthly meetings and I'd like to thank everyone who fights the rush hour traffic to get there. The presentation by George Pilat of Intnet.net was interesting and informative. His operation is geared towards the business client, but, as he expands into more of Hillsborough County, he will offer his service to the home user as well.

The garage/rummage sale with the Greater Tampa Bay Computer Users Group (Brandon) for July 17 is still in the works. This sale will enable all of us to clean out some of those old components and software and help the users group at the same time.

I'm trying to find someone to do a Linux presentation at our June 14th meeting. If you know of someone who is fairly proficient in Linux who might be willing to share their information with the group, please let me know. Mostly I want to know the advantages of using it.

If you sign up for one of our SIGs at the regular meeting, please contact someone if you're not able to attend. Sometimes a SIG leader will be the only person able to make it to the SIG meeting. That's a huge waste of time and resources, so let us know if you can't make it.

I upgraded my home computer to 500 MHz Pentium II and added another 64
(President.....Continued on page 2)

INSIDE THIS ISSUE	
President's Message	1
Minutes	2
Delphi 5 Professional	3
ClipCache Plus	4
World Wide Web Links	5
Recent Computer News	7
Presenter's Tribute	8
A step back in Time	9
Linux Comments	10
SIG Report	10
Members' Help Line	11
Map	12

June 14: To be announced. Check our web site later.

* * OFFICERS * *

President: Mary Sheridan(mcpease@mindspring.com)	988-6480
Vice President : Mike Hodges (hodges@reflectone.com)	962-2114
Treasurer: Jenny Lind Olin (jlolin@juno.com)	960-5723
Member at Large: Merle Nicholson (merlenic@tampabay.rr.com)	879-3602
Secretary: James Weber (jlweber9@mindspring.com)	671-1612

APPOINTED (Volunteers)

Editor: William LaMartin (lamartin@tampabay.rr.com)	251-3817
Librarian: Larry Anders (larry.anders@gtemail.net)	989-9119
Program Coordinator: Mary Sheridan(mcpease@aol.com)	988-6480
Membership: Cheryl Alexander (cbear@quadra.net)	914-0008

Home Page <http://www.tpcug.org>

Bits of Blue is published by the Tampa PC Users Group, Inc., a State of Florida registered non-profit corporation, to provide educational information about personal computer systems to its members. Our mailing address is P. O. Box 3492, Tampa, FL 33601-3492.

However, for business concerning this newsletter, Bits of Blue, please contact the Editor, William LaMartin, at 821 S. Boulevard, Tampa, FL 33606-2904; 813-251-3817; lamartin@tampabay.rr.com.

Technical information found in this publication is not necessarily compatible with your hardware and software; plus other errors or misprints could occur from time to time. Therefore, the use of programs, commands, functions or anything of a technical nature appearing in this publication will be at your own risk.

Contributors are asked to submit articles as an ASCII, Microsoft Write, Microsoft Word, or Word Perfect file to the editor at 821 South Blvd., Tampa, Florida 33606-2904 or to lamartin@tampabay.rr.com.

Permission to reproduce portions which are not specifically copyrighted is given to other computer users groups for nonprofit use. Reprints must be unaltered; proper credit given to the author and publication; and a copy of the publication must be sent to the attention of the Bits of Blue Editor at the club address. All other reproduction is prohibited without the specific written permission of the original author.

The use of trademarked and copyrighted names herein is not intended to infringe upon the owner's rights but rather to identify the products for the enlightenment of our users.

Commercial advertisements will be accepted. For rate information please contact the Editor by one of the above listed methods.

All advertisements must be prepaid by check payable to TPCUG, be in camera ready format (actual size, black ink on white paper), and be submitted on or before the 20th of the month preceding the month of publication. Commercial advertising is usually limited to 25% of the total space of an issue. The Editor reserves the right to hold ads if the total space for ads exceeds this limit or if they are not received on time.

Members may insert non-commercial ads at no charge with the following limitations: no more than 4 ads per member per year; no more than 40 words (240 bytes including spaces); must be camera ready copy or an ASCII file on diskette or as an attachment to an email message to the Editor. Those wishing to place ads are to contact the Editor, William LaMartin, at (813) 251-3817 for space availability and for further information.



apcug Member of
The Association of
Personal Computer User Groups

Minutes of the April Meeting

*By Mary Sheridan substituting for
James Weber, Secretary, Tampa PC Users Group
jlweber9@mindspring.com*

At 6:00 PM Mary Sheridan started the Windows SIG. Some Windows tips and tricks were presented, and a broad discussion of computer problems followed.

The general meeting started at 6:30 PM with our president, Mary Sheridan, presiding. Mary introduced the officers who were present and handed out information about a free upcoming event called "The Road Warrior Tour" at the Doubletree on Cypress 4/20/00.

At 7 PM the presentation began. George Pilat, our speaker, was from Intnet.net, an Internet Service Provider. In addition, they are a complete communications solutions provider. He spoke about the different levels and different kinds of digital subscriber lines. He compared DSL to the cable modem, as well as explaining the different kinds of DSL. DSL is an "always-on" connection.

At 8:30 a break was taken and we had a drawing for the door prizes at 8:45 PM. Bob LaFave won first prize, a copy of Windows 2000. We also gave away three T-Shirts to Arthur Young, William LaMartin and Bill DeLucia. Brian Lance won an insulated mug and a gift certificate for a Laser Perfect free refill. ♦

(President.....Continued from page 1)

MB of memory. It flies now thanks to Steve Singer of <http://morevalu.net/>. He was available on the weekend and walked me through the changeover. You'll remember Steve from the great presentation he gave at one of our meetings. Thanks Steve, for all you've done to help the group.

Several of us attended the Microsoft presentation at USF sponsored by the Greater Tampa Bay Computer Users Group. Mary Sue Cameron of Microsoft did an excellent presentation. I didn't walk away with much new information though. It seems that Microsoft is having trouble with their Millennium release. And that's hardly a "news flash".

A great big **THANK YOU** to the Tampa Tribune, The St. Petersburg Times and Temple Terrace News for publishing information about our meetings.

(President.....Continued on page 8)

Delphi 5 Professional from Borland

By William LaMartin, Editor,
Tampa PC Users Group
lamartin@tampabay.rr.com

One of the prizes for second place in the recent FACUG web site contest was a copy of Borland's programming package Delphi 5 Professional. Quite a nice prize, since the discounted price of the package at CDW's online store is \$540 (retail \$799). There are two other versions available. Delphi 5 Standard costs \$89 and Delphi 5 Enterprise is a whopping \$2,468 at CDW. The Standard version is sort of like a learning edition and contains no database connectivity. It does allow you to create the small stand-alone EXE's that I mention below. The Enterprise edition contains one feature I would like—ADO database connectivity, but there is enough in the Professional edition to keep me busy for a long time. So my hard work on the web site over the years has resulted in my getting a program that is also going to demand much work in the coming years.

I have been programming in Microsoft's Visual Basic for quite a number of years, so it is interesting to compare the two programming environments. Both Delphi and Visual Basic are considered Rapid Application Development environments, since they allow the programmer to get a working model of his application out much faster than, say, the C language would. Visual Basic's programming language is based on BASIC. Delphi's language is based on Pascal and is called Object Pascal. The program comes with a hard copy developer's guide and an Adobe Acrobat version of the Object Pascal Programming Language guide. Of course, there is extensive online help. I judge the online help about as easy to use as the VB online help. Of course, I could always use more examples of code than is provided. It is one thing to see the definition of a particular function or statement and quite another to see an actual example in code of its use.

With Pascal being a new language to me, there is some learning to do. But I have written several small programs and one simple database program. The database program was the only one so far that has required an installation package for installation on another computer. With Visual Basic, if you want to install the program you have written on your development computer on a different computer you have to create an installation package using VB's Packaging and Deployment Wizard and then use that package to install your program on the other computer. And no matter how simple your program, the installation package is always going to be too large to fit on just one floppy.

And here is the beauty of Delphi 5. For simple applications you write—those not using ActiveX controls or database connectivity—you can simply take the resulting executable file,



Borland Delphi 5

High-productivity development for the Internet

place it on another computer and run it. I think the base size of such an executable is around 300 KB – 350 KB.

My first application consisted of creating a program that had a running clock, allowed the user to search a directory tree to select a text file or RTF file to open, then displayed that file so that the user could make modifications to the text and formatting and then choose from a directory tree where to save the file. It allowed him or her to again search a directory tree for a graphic file to display. Finally, there were several text boxes and drop down combo and list boxes where various information was displayed and the user could select from items in the combo and list boxes. Command buttons were supplied that when clicked on did various calculations with the items selected. The executable for all of this was around 600 KB and required no installation to run on another computer. I simply placed the application on the other computer's desktop and double clicked on its icon to run it.

I have always wondered why something like the above couldn't be managed in Visual Basic. Now it doesn't matter. Delphi 5 has solved that problem for me. It will be interesting to see how many different computing tasks can be accomplished without having to create an installation package.

My second project was to duplicate a simple program I had written for someone in VB that ran on a client machine which each morning checked for a certain file that was on both the client machine and a server on the network. If the server's version of the file was more recent than the client's, then the program copied the server's version over the client's version. Of course, there was a setup menu where the user could look at a directory tree over the network and select the two locations of the file in question. In writing the code in VB I had used a call to a Windows API file copy function. Once I figured out how to do the same thing in Delphi, I noticed how much simpler it was in Delphi. Although I have done very little with such, it appears that in Delphi you have easier access to the Windows API (Application Programming Interface).

My third Delphi project was to display a database table (our membership list with addresses, etc.) and create a report based on certain fields that could then be printed. Setting this up was very similar to what you would do in Visual Basic 6. You drop data access components on a form and set certain of

(Delphi.....Continued on page 4)

(Delphi.....Continued from page 3)

their properties so as to connect to the database table you want to use. The main difference in using Delphi is that my Microsoft Access Database is not "native" to this Borland product as it is to Microsoft VB, so I had to set up a Data Source Name (DSN) for the Members database using the ODBC entry in the Windows Control Panel (You probably wondered what it was for). That done, then the Borland database engine could use ODBC to connect to the Membership database.

The report was constructed using Delphi's Quick Report feature, similar to VB 6's Data Report Designer. Here you place labels and text boxes (that get their values from the fields of the database) on the report page either in the Header, Detail or Footer sections.

Once finished, it is time to create the installation package. To do this Borland has provided InstallShield Express, a "lite" version of the installation program that you have seen many times when installing commercial programs. The first time I ran InstallShield Express I made two mistakes. I forgot to include the Borland Database engine as part of the package and I did not fill in one of three fields about the program where it asks for Project Name, Version, and Company. I left the company field blank. The program seemed to install fine but would produce a database type of error when I tried to run it. That was solved by including the Borland Database Engine as part of the installation. However, with that solved, I then noticed that the program did not appear in the list of programs that could be uninstalled in the Add/Remove section of the Windows Control Panel. A search of the InstallShield web site produced an article stating that this is exactly what would occur if you left any of the three fields mentioned above blank. So I went back and put in something for Company, and everything was then fixed.

I have much to learn and am really a beginner with Delphi and its Object Pascal language. However, I have been pleased how well my trials with it have gone so far. At this point, I cannot really compare it with VB very well, since I have been working with VB for many years, and I have only been using Delphi off and on for a month. But I do like the ability to make stand-alone executables of simple programs.

Also included in the package are JBuilder Standard (Java development), C++Builder Standard (C++ programming) and HotMetal PRO 5.0 (Web Pages). I think, though, that I have more than enough on my hands without trying to use JBuilder to develop Java programs.

Perhaps after I have worked with Delphi for a much longer time, I will have material for another article.

I should note that the ability to access data sources using ADO

(Delphi.....Continued on page 6)

ClipCache Plus

*By Larry Anders, Librarian,
Tampa PC Users Group
larryanders@email.msn.com*

Occasionally I come across a program that's a real keeper, and I'll admit it's been a while since I've found one, but ClipCache *Plus* version 2.6 fits the bill. In a past newsletter article (February 2000), where I listed some killer software, I mentioned another program similar to ClipCache *Plus*, called Clipmate for Windows, which is also a clipboard extender. By that I mean it allows you to save more than just the last text or graphic copied. While Clipmate does a good job of saving your clips, that's about all it does. ClipCache *Plus*, on the other hand, is a clipboard extender with quite a few other options.

ClipCache *Plus* sits in your system tray monitoring all clipboard activity and automatically saves clipboard objects to a currently active group folder. Your clips may then be retrieved within minutes, hours or whenever you need them. You can also create new folders where you can drag and drop a clip into that folder for long-term storage. Any text clip can be edited on the spot using any of the many handy cleanup functions I'll discuss later. There are no limits on the number of clips ClipCache *Plus* can store and organize, other than the usual disk space and memory requirements.

ClipCache *Plus* has several text editing and formatting operations. For example, the one that got my attention was its ability to strip, or remove, certain characters from your clips, like that gosh-awful bracket indentation (>) on forwarded emails. I refuse to forward an email without first removing all the greater-than signs, which sometimes takes a little while. Not any longer. Just highlight and copy the text to be forwarded and click on "clean-up text". Put a check in the box next to "trim bracket indentation '>'" and voilà, it's done. Other text operations and changes that can be made are:

Trim "!" indentation	Trim "!" indentation
Trim space indentation	Trim tab indentation
Trim custom character indentation	Make upper case
Make lower case	Transpose case
Sentence case	Sentence strict case
Word case	Word strict case
Remove empty lines	Remove line breaks
Remove CR/LFs	Paragraph spacing
Strip <> from email addresses	Strip HTML tags
Trim Left	Trim Right.

A **Cleanup Text** dialog box allows all formatting operations to be simultaneously processed. Your favorite settings can be saved as pre-sets for later use. Text items may be **merged** into one clip, the order of the clips to merge may be reorganized,

(ClipCache.....Continued on page 5)

(ClipCache.....Continued from page 4)

and/or text may be inserted between existing clips. **Append** mode allows the appending of copied text to the current clipboard contents. And the preview pane supports in-place editing and a context menu that includes **Find and Replace** and **Undo** commands.

ClipCache *Plus* adopts a standard Windows look and feel (drag and drop, property pages, context menus) and its highly intuitive and configurable options cater to the individual needs and preferences of all kinds of users. If you prefer to use hotkeys, the system tray, the main application window, they're all configurable.

The ClipCache *Plus* main window is divided up into three separate areas (panes): Group, Item and Preview panes. The Item pane may be sorted by clicking (or right clicking) on the required column (name, size, format, date or source window); click again to toggle between ascending or descending sort. Items may be dragged from the item pane to different groups or to different applications which support that format.

QuickPaste automatically pastes into the most recently used application, while **FormPaste** can paste automatically into the most recently used application and then tab to the next field of that application, ready to paste the next item - handy for filling in forms. If **AutoPaste** is enabled, then everything copied (from any application) to the Windows clipboard will automatically be pasted into a chosen target application. Ideal for collating snippets of information. A **Find** feature allows quick and easy location of any items, and clips can be printed or sent by email.

While future versions plan to support more formats, currently the clipboard formats supported are:

(ClipCache.....Continued on page 6)

INTERNET PICTURE OF THE MONTH



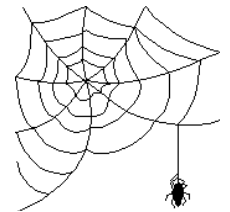
From the April 28, online version of CNN

The graphic above headed CNN's April 28 online story about the Justice Department's specific plans regarding the punishment of Microsoft. Although the story indicated that the government intended to break the company into two pieces, the graphic had it split into three. <http://www.cnn.com/>

May's Interesting World Wide Web Locations

Tampa PC Users Group (that's us)
 Wines on the Internet Guide to Wine and Wineries
 The Internet Public Library
 The Creole and Cajun Recipe Page
 E-Books on Computing
 FDIC Federal Deposit Insurance Corporation
 TheHistoryNet - Where History Lives on the Web
 SwapIt.com (swap CDs online)
 CDW (online computer shopping)
 Borland (software)
 Essential Pascal (Object Pascal Programming)
 Delphi programming tutorials, tips, sources, utilities

<http://www.tpcug.org/>
<http://www.wines.com/>
<http://www.ipl.org/>
<http://www.webcom.com/~gumbo/recipe-page.html>
<http://www.ee.itu.edu.tr/ebooks/>
<http://www.fdic.gov/>
<http://www.thehistorynet.com/>
<http://www.swapit.com/>
<http://www.cdw.com/>
<http://www.borland.com/>
<http://www.marcocantu.com/epascal/default.htm>
<http://www.festra.com/eng/intro.shtml>



Some of these links will join the many already on the Links page at our web site, where you need only click on the name.

(ClipCache.....Continued from page 5)

- Text (plain text)
- Rich Text (font type, size, colour etc. is retained)
- OEMText (Text displayed in an OEM font)
- Bitmap (Device Independent Bitmap)
- Enhanced Metafiles
- Drop (files copied to the clipboard are imported as text file names)

The following are just some of the cool things you can do with ClipCache *Plus*:

- Storing of text clips from applications for reading later or pasting into other applications.
- Copying text and making changes to it prior to pasting.
- Instant retrieval and pasting of frequently used text clips.
- Removing unwanted forwarding indents ">>>>" from emails.
- Removing white space and large gaps from text copied from web tables or email.
- Formatting text prior to pasting.
- Assign hotkeys to your favorite functions.
- Clip hotkey assignments can be managed from a central Hotkey window.
- Collating several text snippets into one pastable clip.
- Use as a text editor.
- Fill in web forms.
- Storing of images for later viewing or transferring to an image editor.
- Ideal research tool for copying information (text/ images) from various sources.
- Game cheats: visit your favorite game cheat site and copy any cheats to a "cheats" group, then print them out with ClipCache *Plus* later.
- Create Text Clips allows sticky notes usage, which can be pasted any time.
- The 3 pane view (Group, Item and Preview) allows easy management of clips.
- Easy to use explorer style interface.
- Displays clip attributes: Name (supports renaming), Size, Format, Date & Source Window.
- Sort clips based on any clip attribute.
- Edit clips by typing directly in the preview pane.
- Merge selected clips to a list or with any separators you wish, such as commas, semicolons, hyphens, etc.
- Append text to the clipboard, rather than replacing the clipboard.

- Save captured clips to individual files.
- Manage folder/group size using the "purge" feature, or set size limits for each folder.
- Trashcan group avoids accidental deletion of clips.
- No restriction imposed by ClipCache *Plus* on number of clips.
- Expanded Search/Find facility with highly effective "Search and Replace".
- FormPaste facility pastes selected clip into the most recently used application and then automatically TABs to the next field.
- QuickSelect hotkey shows a tooltip of the currently selected clip below the mouse pointer.
- ClipMenu displays captured clips as a popup menu under the mouse pointer.
- Emptying the Windows clipboard to free up memory.
- Many custom configurations possible.
- Drag & drop clips from the item pane to applications.
- Drag & drop selected text from the preview pane to applications.
- Drag & drop data from applications to the Group, Item or Preview pane.

A trial copy of this handy utility that Microsoft left out of Windows can be downloaded at <http://www.xrayz.co.uk/>. If you like it - it's only \$19.95. I believe I'll be keeping this program for a long time. ◆

ClipCache *Plus*

(Delphi.....Continued from page 4)

(ActiveX Data Objects) can be added to Delphi 5 Professional for around \$200. It is the main method I use in VB to connect to data sources, and in VB 6 it is free.

<http://www.borland.com/delphi/> ◆

Recent Computer News

By William LaMartin, Editor,
Tampa PC Users Group
lamartin@tampabay.rr.com

Microsoft Breakup The big news item recently in the computer (and business) world is the Justice Department's idea on what should be done with Microsoft now that Judge Penfield Jackson has declared that they have abused their monopoly position in the software industry. The Justice Department and 19 states (or at least 17 of the 19 states) have proposed splitting Microsoft into two parts. The Windows business would be split from the Applications business. Microsoft would have to submit a breakup plan within four months, the two companies would have separate boards of directors, and the breakup would have to last for at least 10 years. The breakup, however, would not take effect until Microsoft had exhausted the appeals process. Bill Gates said that Microsoft could never have developed Windows under such rules, that they are bad for the software industry and software consumer, that such rules make no sense, and that Microsoft is sure that an appeals court will overturn such a ruling if a court does implement it according to the Justice Department's recommendations. The Justice Department's Joel Klein portrays the Department's actions as in the best interest of computing and the consumer.

You be the judge. For myself, I sort of like Microsoft, don't really think the lawyers at Justice understand software, think they have a bias against Microsoft (they use WordPerfect at the Justice Department) and don't think that their actions will lower the price of software to the consumer. Now, instead of one monopoly, after the breakup we will have two monopolies. That said, I do think Microsoft has done some pretty low things over the years to its competition—just about the same as the competition would have done to them if they could have pulled it off. I seem to recall that one of the goals of the Netscape crowd when they were riding high (for about six months) was the destruction of Microsoft by rendering everything in computing browser centric with the removal of the Windows desktop environment to the margins of computing.

Stock Values Of course, with the news of the possible breakup of Microsoft, its stock took a dive along with the values of many other computing related stocks (including the stocks of Microsoft's enemies) and the tech sector as a whole. And some pundits were quick to claim that the Justice Department was putting the economy into a tailspin. I agree that the recent Microsoft problem was good reason to devalue its stock, but I don't think we can blame Microsoft's woes for the decline of the stocks of all those dot.coms that have very little product and no income but were valued up there with the giants of American industry. Here are some examples of the deflation in such stocks. I gathered the information the latter part of August.

RedHat Inc. (RHAT): close 27 3/8 on 4/26/2000; 52-Week High 151 5/16 on 12/8/1999 ; 52-Week Low 20 on 8/11/ 1999. The close is about 18% of the high.

VA Linux Sys (LINUX): Close 42 1/2 on 4/26/2000; 52-Week High: 320 on 12/9/1999; 52-Week Low 26 7/8 on 4/14/ 2000. The close is about 13% of the high.

Ivillage Inc. (IVIL): Close 10 1/16 on 4/28/2000; 52-Week High 79 on 5/3/1999; 52-Week Low 9 1/2 on 4/4/2000. The close is about 13% of the high.

drkoop.com Inc. (KOOP): Close 2 3/4 on 4/28/2000; 52-Week high 45 3/4 7/6/1999; 52-Week Low 1 15/16 on 4/18/2000. The close is about 6% of the high,

Peapod Inc. (PPOD): Close 3 on 4/28/2000; 52-week High 16 3/8 on 11/5/1999; 52-Week Low 2 on 4/14/2000. The close is about 18% of the high.

Cdnw, Inc. (CDNW) Close 4 5/16 on 4/28/2000; 52-Week High 23 17/24 on 7/12/1999; 52-Week Low 3 on 4/17/2000. The close is about 18% of the high.

And one that is not quite as bad as those above:

Amazon.Com Inc. (AMZN) 55 3/16 on 4/28/2000; 52-Week high 112 3/8 on 12/9/1999; 52-Week low 40 3/16 on 4/14/2000. The close is about 49% of the high.

And to make matters worse, these companies and many, many other dot.coms have only enough cash on hand to keep spending at their current rates for just a few months, which introduces the following shocking item—at least to me as a long time Corel Draw user, it is shocking.

Corel in its quarterly filing with the Securities and Exchange Commission said a "cash deficiency" may occur if its merger with Imprise/Borland isn't approved by shareholders or the company fails to secure other sources of financing.

Quoting the Wall Street Journal, "Last month, Corel reported cash holdings of about \$29 million along with a \$12.4 million loss for the quarter ended Feb. 29. It said the prospects for the next two quarters wouldn't improve because of falling sales of its two main products, the WordPerfect and Corel Draw software applications."

When you note that Imprise/Borland has about \$250 Million in cash, you can see why Corel might want the merger. It is less clear what Borland will gain other than software that is apparently not selling well and Corel's gamble with Linux, which also may fail. ♦

Presenter's Tribute

*By Mary Sheridan, President, Tampa PC Users Group
mcpease@mindspring.com*

I've been trying since I took over the office of president to find someone to be our Program Chairperson. Not having any luck, I thought I'd stroll down memory lane and remember all the presenters of the past couple of years. Maybe it will give someone the incentive to get the kinds of presentations that they want to see instead of the ones I've wanted to see.

The first presentation I scheduled was Pat Horvath of Mind-spring. He lost his scheduler on the plane to Tampa and never showed up at the meeting. Well, I was off to a great start.

At that time, Robert Armstrong of BCD came every year to talk about the latest hardware. He came to the next meeting, answered lots of difficult questions and gave away two \$50 gift certificates. Next, there was Joe Roediger of Micro Star. He had an extensive stock market tracking software package. It was pretty expensive, but I heard that a least one person in the group bought one.

I missed the next meeting, but Melanie Arsenault of Kinematics gave an overview of surge protectors. Then, Dick Kellerman, the software "Evangelist", represented MGI software. Last time we saw Dick, he was showing Partition Magic.

Mike Austin of Waldec/IKON Office Solutions was very knowledgeable about Microsoft and the Microsoft certifications. He explained the use of different types of server/client computer setups used in the office environment. In June of 1998, Mike Bruzzone brought the WinChips into our lives, and some of us will never be the same. I have to admit I learned a lot because of the experience.

Gateway sent Rich Podoisky and Beth Wood, and they fielded some very technical questions. Quarterdeck came, and I haven't heard anything about the company since. Tom Rivers and his son were starting their own consulting business, so I guess they're doing okay.

Vinnie Barber was as much fun as I've ever had at a user group meeting. He showed us the Alps Printer, a cheaper web site than Alps.com to buy the printers, and made us laugh. He went to Applebee's with a group of us after the meeting, and he told us that he was doing stand up comedy when someone from Alps asked him to represent them. Now that's different!

Robert Armstrong of BCD came again and introduced an ISP that BCD was involved in.

Jasc Software sent Julie Alstatt. She was smart and cute and

very easy to listen to. She got a few people to even buy Paint Shop Pro. Cheryl Alexander told her she was having trouble with a feature of Paint Shop and Julie gave Cheryl a book to help her.

Captain Rod Stebbins told us how to start our own business at home. Mark Haley sold some "not too great" National Parks CD's (my opinion only). Jason Velasco of Ontrack guaranteed to recover anyone's hard drive, for a price. I don't know of anyone who used the service, but in a crisis it would be invaluable. Tom Walsh of American Power Conversion gave away a rather nice UPS. Roadrunner came again and gave away pens and free installations.

Laser Perfect, a printer ink refill company was represented by Chuck McPherson. I've been getting my cartridges refilled every since and I've been very happy with it. I missed another meeting and didn't get to see Mark Komula of Network Technology Solutions. He explained the ins and outs of home networking. William LaMartin did a great presentation of Adobe Acrobat 4. The multi-level marketing fiasco came next. I'm still apologizing over that one.

BCD was scheduled again, but they were a no-show and Brian Lance saved the day by showing us the diagnostic software he used on his job. Matt McCann was funny and informative in his demonstration of Quicken. We had our first ever Christmas Party, and I thought it was grand.

Steve Singer gave an excellent hardware presentation, Glen Gasbarrow showed us E-Stamp and Jay Kirth came from CompUSA and brought amazingly enough a digital camera for the door prize.

I hope I've brought back some memories and that someone may have gotten interested in bringing in new and innovative presentations in the future. ♦

(President.....Continued from page 2)

Last, but not least, Mike Galvin of Office Depot will be our presenter at the May 10th regular meeting. Hope to see you then. ♦

A Step Back in Time: 12 & 11 Years Ago in the TPCUG

From newsletters donated by Ed Buzza and Roger Waters

In 1988, meetings were in the NCNB building at 600 N Florida Ave., and the president was Steve Spears

The OS/2 Solution

By Bob Fultz

From the February 1988 Bits of Blue

OS/2 is here and I wish to address the effect, at least how I see it, that it will have on our use of microcomputers. First, let us understand that OS/2 is not for everyone. The operating system alone demands a large investment in either new hardware or an expansion of that which we already have. An Intel 80286 or 80386 based PC with a 60 meg hard disk (or bigger) and 2 meg RAM minimum is a must. The operating system alone will take over 1 meg, not including any application which you intend to run. So we have an investment of \$1000 to \$2000 in memory and storage alone for the AT or PS/2 model 50/60 owner, and \$8000 to \$10000 for the rest of us. *Just to run OS/2 and our existing DOS applications!*

Similarly, we will need new versions of existing software and/or new products which will take advantage of the capabilities of OS/2. Our current DOS applications, while able to work under OS/2, will still be limited to the 640K barrier as always. While OS/2 is not multiuser, multitasking will still be available. Early users claim it is very slow when using disk intensive programs. Also, some early reports show that it is difficult to switch between protected-mode and real-mode operations (by some reports you have to re-boot the system). OS/2 may not be as transportable as DOS has been, allowing different versions of OS/2 to run on other vendors' machines. Because of these problems it appears that OS/2 will not overtake DOS until sometime in mid 1989. By then we will be looking forward to OS/2 for the 80386 family of Intel processors.

After all the technical jargon and difficulties are cleared out of the way, I feel that it will be the users who will decide whether OS/2 will take over in 1989. DOS will not die quietly, it still has a long life ahead. EMS will take care of that. There are a large number of the users out there who will never need what OS/2 has to offer and who will never spend the required monies to upgrade hardware. Yes, OS/2 will open up a new era of microcomputing, but its impact is up the road a long ways yet.

President's Podium (February 1988)

It's wonderful to see the good turnouts that we have been having lately at our meetings. I know that we can increase our attendance if we let our friends know about our group, the good information and the fellowship that is available here. Remember, the more people that we have attend on a regular basis, the greater the expertise that we have available to our group. Additionally, we are far more likely to attract the top software and hardware companies to give us demonstrations.

We want to extend our warmest thanks to Kathy Johnson and IBM for their excellent demonstration of the PS/2 Model 50 and a general discussion of the thrust of the whole new IBM Personal Computer Operations. The improvements in the video resolution and the new Micro Channel Architecture do show that these new machines are designed for the late 80s and early 90s when we can expect the software to match their capabilities. My only caveat on these machines is that the Models 50 and 60 are based on the 80286 chip which I regard as no more than a souped-up 8088 chip in capability. Personally, I would not plan on any purchases of these AT type machines if I needed true multi-tasking capability and could afford one of the new 80386 machines that are now rapidly entering the market.

Next meeting we will see a demonstration of the Quattro Spreadsheet and Paradox Database by a Borland Representative. We will have an overhead projector to make this demonstration visible to all.

We look forward to seeing you there. Bring a friend and have a good time!

Steve Spears, President

In 1989, the meetings were at GTE downtown, the president was Harvey Bruneau and the only current member listed as an officer then is Kevan Sheridan. However, current member Ed Buzza was also writing articles for the newsletter.

RBBS Bytes

By Kevan Sheridan

From the March 1989 Bits of Blue

Baud Rate 300/1200

Number 239-3704

One of the benefits of being a member of the IBM PC Users Group is the Bits of Blue electronic Bulletin Board, and every

(Remember.....Continued on page 10)

Special Interest Groups

Microsoft Access SIG

This SIG meets the first Monday of the month at the Gateway 2000 Store on North Dale Mabry (just south of Columbus Drive) at 6 PM.

For information contact either William LaMartin at lamartin@tampabay.rr.com or Merle Nicholson at merlenic@tampabay.rr.com.

Genealogy SIG

To be included on the TPCUG genealogy mailing list, contact

Jenny Lind Olin at 960-5723 or jlolin@aol.com

Visual Basic SIG

This SIG meets the third Tuesday of the month, at the Gateway 2000 Store on North Dale Mabry at 6 PM. For information, contact Merle Nicholson at merlenic@tampabay.rr.com.

Windows SIG

This SIG occupies the first 30 minutes of our monthly, regular meeting at MOSI and is devoted to a general Windows and computing discussion. Mary Sheridan moderates the discussion.

(Remember.....Continued from page 9)

member should learn how to take advantage of this valuable asset and its offerings. Unfortunately, many members do not understand what a RBBS is or how to fully use it. This month I want to introduce the BBS to you and encourage the membership to use and enjoy the Board.

Our Remote Bulletin Board System (RBBS) consists of a XT compatible with a 20M hard drive and a 300/1200 Baud modem. It is accessible 24 hours a day, seven days a week. It contains a variety of free public domain programs which include games, DOS tools, telecommunication packages, and much more. The Board also has a computerized bulletin board, an electronic mail system, a files system, and much much more. And all of this is just a modem call away.

When you call the Board use your name to tell the system who you are. If you have not called the Board before it will ask you if you wish to register as a newuser. When you answer YES the system will then ask you about your "setup". For a simple first time use answer No or None to most of these questions. Later, when you learn what they mean you can change them with the utilities. From there remember to read the prompts. If you have trouble enter a question mark for further help. Once you have called the system once you can then "TURBO LOGON". By this you just enter your FULL name AND password when asked for your FIRSTNAME. If you have done it right you will see dots as you type your password. ◆

Editor's Note: Our BBS has been replaced by our web site.

Linux Comments

By Don Patzsch,
Tampa PC Users Group
patzsch@acompu.usf.edu



Linux is a computer operating system.

The trade magazines tell us that IBM has set up Linux so that it is used on their 390 mainframe. IBM's workstations and servers using Linux are selling well. The trade magazines further state that Linux is now on 30 per cent of the world's servers and is used in millions of businesses around the world. Recently, Corel is reported to have "bet the farm" on Linux, and they put on a great show of Corel Linux in Tampa recently. I bought my first book on Linux in 1995. It is *Using Linux* by Que books, and it contains a Linux CD ROM. Since then, I have toyed with the program but have not tried to go into it seriously. I first used UNIX at USF in 1982 on the mainframe, and I have been using it at USF since. We used it on the command line in the course "Internet" in the summer of 1994. We did not use a browser much during that course. In other words, no GUI. All of you who have been using the Freenet have been using the command line and a DOS browser called LYNX. It doesn't require graphical interface of any kind, i.e. no Apple, Mac, or Amiga. So you all use UNIX and you all use LYNX, one way or another, in my opinion.

I wanted to find out a little about the Linux computer operating system, because I plan to have my computer loaded with Linux ONLY.

On the Internet, <http://www.linux.org/users/index.html> lists people in your community that are interested in Linux. Also, on the Internet at the URL <http://www.linux.org/hardware/>, you can find many, many companies that manufacture and sell computers with only Linux installed. Linux comes with Office Suites

(Linux.....Continued on page 12)

Friends of the User Group

We acknowledge the following firms for their support

Museum of Science and Industry
Gateway 2000
BAE
Marshall & Stevens

And these software and hardware vendors for their demonstrations and review software and contributions of evaluation software to our group

Adobe Systems	Microsoft
CompUSA	Office Depot
Corel Systems	PowerQuest
Imprise/Borland	RDI, Inc.
Intuit	Symantec

RENEWING YOUR MEMBERSHIP?

WE CERTAINLY HOPE YOU WILL

MAIL YOUR CHECK AND ANY
ADDRESS OR NAME CHANGES TO:

TAMPA PC USERS GROUP
PO BOX 3492
TAMPA, FL 33601-3492

\$25 Individual \$35 Family
\$60 Corporate = 3 employees + \$20 each add'l employee

Go to our web site <http://www.tpcug.org> and click on the Join link to fill in an online membership application

Check the address label for your renewal month

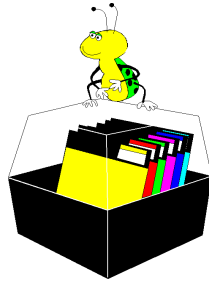
MEMBERS' HELP LINE

Program	Code	Name	Time	Phone	Codes
Adobe Acrobat	AA	Cheryl Alexander	10:00am - 9:00pm M - F	914-0008	HTM,PSP,WP
AOL	AOL	Larry Anders	Mon - Sun 6:00pm - 10:00pm	989-9119	AOL, ME, MW, FP, PSP
Computer general	CG	Warren Fuss	10am - 9:30pm	949-6844	CG, WNT, N
Delphi	DE	Bob LaFave	8:00pm-10:00pm	248-3379	W95/W98, MOS
DOS	DOS	William LaMartin	Mon - Fri 9:00am - 9:00pm	251-3817	AA, FTM, IG, MOS, MP, VB, W95
Family Tree Maker	FTM	Merle Nicholson	Mon - Fri 7:30pm - 9:30pm; weekends	879-3602	CG, DE, DOS, HG, HM, HP, VB
Hardware general	HG	Jenny Lind Olin	Mon - Sun 8:00am - 10:00pm	960-5723	ME, MW, PAF, Q, WP
Hardware Modem	HM	Don Patzsch		689-8662	CG
Hardware Printer	HP	Mary Sheridan	9:30am - 9:00pm	988-6480	AOL, CG, DOS, HG, IG, MW, Q, W95, W98
HTML coding	HTM				
Internet general	IG				
Micrografx Graphics Suite	MGS				
Microsoft Access	MA				
Microsoft Excel	ME				
Microsoft FrontPage	FP				
Microsoft Office Suite	MOS				
Microsoft Publisher	MP				
Microsoft Visual Basic	VB				
Microsoft Word	MW				
Networking	N				
PAF	PAF				
PaintShop PRO	PSP				
Quicken	Q				
Windows 3.1	W3				
Windows 95/98	W95/98				
Windows NT	WNT				
WordPerfect	WP				

We encourage other members to add their names to the list of those willing to assist fellow members with their computer problems. Contact William LaMartin to add your name to the list.

Tampa PC Users Group, Inc.

P. O. Box 3492
Tampa, FL 33601-3492



NONPROFIT ORG.
U.S. POSTAGE
PAID
TAMPA, FL
PERMIT NO. 1917

- Member: Your membership is up for renewal
- Vendor: Your product was reviewed on page ___

(Linux.....Continued from page 10)

and programs to connect to the Internet, etc. The interesting feature of this URL is that you may now buy a Linux computer that contains Winux. Winux is a program that allows you to have a computer that has Linux as the main operating system, however, you can call up Windows 98 like a shell and run the Windows programs even though you have Linux running your computer. If you do not understand what this means, simply go to several of the companies above and read the story for yourself. I spent about five hours looking these URL's over to be sure I can run the computer after I have the Linux programs installed. I also called many people to verify that I can run the computer once it is set up, just as they did at the Corel show.

At Best Buy, SUSE Linux costs \$29.99. On the box, it says there are six CD ROM's inside, and they contain 1,500 programs. There is, also, a large, easy to understand manual. ♦

